





“

**Atlas Pantou
is committed
to constant
growth, and the
advancement
of construction
and building
techniques to set
the bar higher
and higher.**

”

-Atlas Pantou

“ We build on foundations of trust and professionalism, looking towards the future. ”

-Atlas Pantou

CONTENT

Message from the CEO of Atlas Pantou	5
Atlas Pantou Group Founder	7
Atlas Pantou Co Ltd Founder	9
Company Profile	10
Our values & vision	11
Awards and Certificates	12
Company Milestones	14
Residential Buildings	16
Office Buildings	22
Retail Buildings.....	28
Hotels & Resorts	34
Hospitals & Health Centers.....	40
Technical / Civil Engineering Projects.....	46
Restorations/ Renovations/ Upgrades	54
Overseas Projects	56
Additional Projects in Cyprus and Abroad	58



Message from the CEO Marios L. Pontikis



On behalf of Atlas Pantou Co Ltd, I welcome you!

We are proud that our company's origins date back to 1937, when our founder, the late Panayiotis Toumazis, established his first technical office in Famagusta. Since then, we have managed to complete a huge number of prestigious projects, both in Cyprus and abroad, and establish ourselves as quality professionals in our field.

The high standards of our work and our persistence on fair dealings, innovation, professionalism and teamwork, has earned our clients' trust and our collaborators' respect. It is on the basis of these values that we are now included in the elite group of the leading and pioneering construction companies on the island.

Success, however, has not made us complacent. We continue to improve ourselves in all aspects of our work.

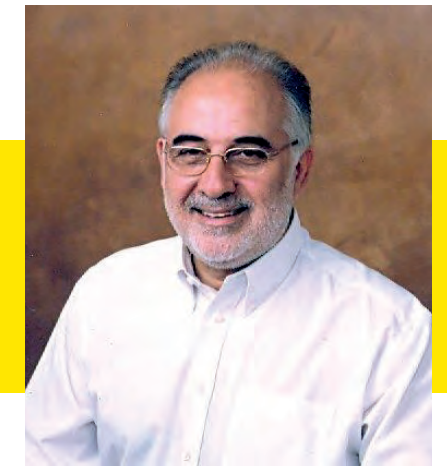
We strive to further develop our corporate values and strengths. We welcome new challenges and nurture our culture of quality work intertwined with social consciousness, in order to continue delivering projects which exceed our clients' expectations and serve a social purpose.

We systematically invest in our people and consciously try to establish an optimistic, challenging and meritocratic work environment, where employees, both as individuals and as teams, can flourish and unfold their full potential.





Tonis P. Toumazis, Atlas Pantou Group Founder



Tonis Toumazis was born in 1952, in Famagusta.
He is the son of Panayiotos Ant. Toumazis and Ioulia Toumazis Kempelidou.

He took over as Managing Director of ATLAS PANTOU in 1987. He is also the Founder of ATLAS PANTOU and ATLAS PANTON groups, two dynamic groups that include more than 15 companies that operate both in Cyprus and abroad. Tonis Toumazis is a U.C.L. (University College London) Civil Engineering graduate (Bsc. Honours) with post graduate degrees in Structural Engineering (Msc. Structural Engineering and D.I.C. Diploma) from the Imperial College, London and Architecture (MA Advanced Architectural Studies) from London's Bartlett School of Architecture.

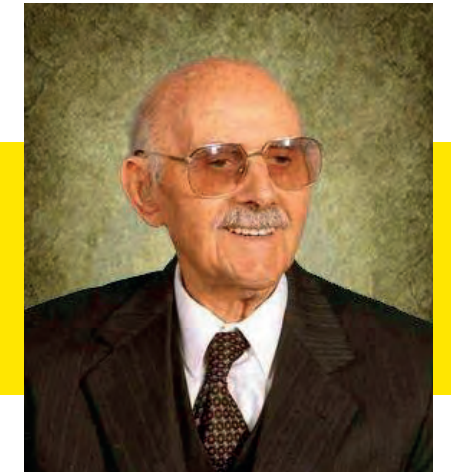
Prior to joining ATLAS PANTOU he was a member of the Civil Engineering teaching faculty of U.C.L. He also worked as an engineer of offshore oil platform design at Matthew Hall Engineering and a structural engineer at Lloyds Register of Shipping in London.

He is a member of the Institute of Marine Engineering Science and Technology since 1980 and a Chartered Engineer and member of United Kingdom's Engineering Council. He is the President of Cyprus Research Centre (KY.KE.M) since 1997, a founding member of the movement "Kinissis gia tin Evropi" (marching towards the European Union), a member of Famagusta Rotary Club, and a founding member of Cyprus Society for Quality. He is also the Vice President of the Board of the Famagusta Chamber of Commerce and Industry, a member of Cyprus Employers and Industrialists Federation (OEB) and Famagusta's Council for Reconstruction and Resettlement.





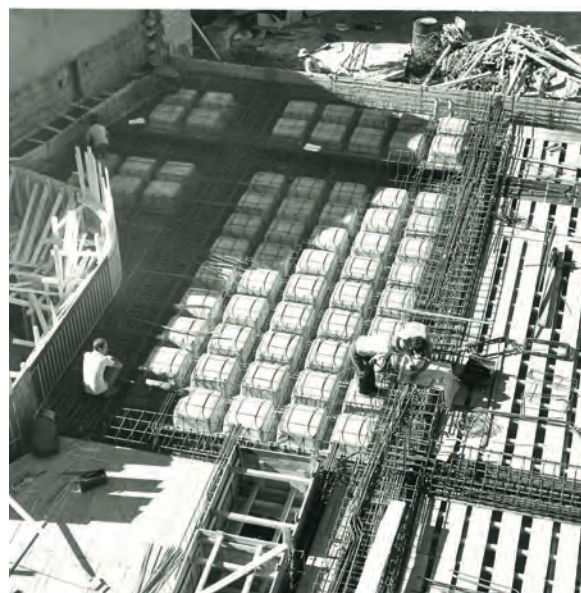
The late **Panayiotis Ant. Toumazis**
Atlas Pantou Co Ltd Founder



Panayiotis Toumazis was born in 1912 in Agios Memnonas, Famagusta. He was a graduate of the National Technical University of Athens (Metsovion Polytechnic of Athens), the oldest and most prestigious educational institution of Greece in the field of technology.

In 1937, the late Panayiotis Toumazis, founded his first technical office in Famagusta named 'TECHNICAL OFFICE, PAN. TOYMAZIS'. In 1942, he established the partnership 'PANTOUMAZIS CONSTRUCTIONS', in 1957 he founded the company 'ATLAS CONSTRUCTIONS LTD' and in 1963 the company 'PANTOUMAZIS LTD'. In 1974, due to the Turkish invasion, the operations of 'PANTOUMAZIS CONSTRUCTIONS' and 'ATLAS CONSTRUCTIONS LTD' ceased their operations. In 1975, 'ATLAS PANTOU CO. LTD' was born as the successor of the two companies.

Panayiotis Toumazis left his footprint in the city of Famagusta. During the period 1960-1974 he actively contributed to its remarkable growth as he was the first civil engineer of the city, but more important was his participation in Cypriot political life. He served as a member of the parliament for 10 years and later as the Minister of Agriculture and Natural Resources during Archbishop Makario's presidency.





Company profile

Historically, the roots of Atlas Pantou date back to 1937-38, in Famagusta, where the late Panayiotis Ant. Toumazis founded his first technical office, "TECHNICAL OFFICE, PAN. TOUMAZIS". In 1942 he formed the partnership "PANTOUMAZIS CONSTRUCTION", in 1957 the company "ATLAS CONSTRUCTION LTD" and in 1963 the company "PANTOUMAZIS LTD".

As a consequence of the Turkish invasion and occupation of Famagusta, PANTOUMAZIS LTD and ATLAS CONSTRUCTION LTD ceased their operations but in 1975, ATLAS PANTOU CO LTD was founded as the successor of the two companies.

With over 250 passionate employees, over 420 completed projects and over 80 years of experience, ATLAS PANTOU has left its mark throughout Cyprus, with projects that are benchmarks, pioneering with new approaches and techniques. The steady steps and the hard work of its people made ATLAS PANTOU today one of the leading construction companies in Cyprus, with a significant presence overseas.

The **ATLAS PANTOU** portfolio of works includes a variety of building and technical/engineering projects:

Building projects: High-rise buildings with luxurious apartments, residential complexes and luxurious villas, tourist resorts and hotels, office and commercial buildings, retail buildings and shopping malls, industrial facilities, hospitals and health centers.

Technical / Civil Engineering projects: Sports Facilities, road works and bridges, power stations, sewerage, drainage and pumping station projects, military facilities and big maintenance contracts which include the British Sovereign Bases in Cyprus.

ATLAS PANTOU holds a class 'A' contractor's license in technical and construction projects, thus having the right to execute projects of unlimited value and size. With its commitment to protect and minimize the effects of its operations on the environment, it is one of the first companies to certify its operations in the areas of Quality Management, Environmental Management and Occupational Health and Safety based on the requirements of the International standards of BSI.

Since its inception **ATLAS PANTOU** held its values and it is proud to have built relationships on trust and transparency. As the company looks towards the future, it will continue to innovate and adapt, to rise to the expectations of its customers and the standards of its partners, as excellence is only achieved through the willingness to grow.

Our vision & our values

“ Building legacies together with our clients through projects that will stand through time and serve the society. ”

To further develop our corporate strengths, we have established a corporate mandate to maintain strong core values that truly reflect the company's philosophy.

These core values are the bases of our foundation:

Integrity and Trust

- We build all our business relationships based on honesty, ethics and trust.
- We do the right thing by always seeking transparency in all our transactions.

Customer Satisfaction

- We are committed to our customers' approval and our work is not complete until all specifications have been met.
- Continue building strong customer relationships.

People

- Our people are our company.
- We recruit knowledgeable and highly skilled professionals while also providing opportunities in training and self-development for all our team members.

Health and Safety

- Prevent work-related injuries.
- Occupational Health and Safety for everyone who may be affected by our work activities.

Environment

- Efficient use of resources.
- Protect and minimize the effects of our operations on the environment.

Quality

- Deliver the highest level of quality construction services to our customers.
- We are proud to stand behind the total quality of the work we deliver.

Ability to Adapt

- We understand that change is the only constant in life.
- To be at the top we need to adapt.

Development and Innovation

- Finding better ways to do things.
- We believe that there is always room for innovation.

Awards and Certificates

Atlas Pantou Co Ltd holds a contractor's license for first class building and civil engineering projects in Cyprus, thus being entitled to undertake projects of any size and value. We are committed to protect and minimize the effects of our operations on the environment, achieving consistently high standards of health and safety and achieving consistently high standards of service to our clients. We are one of the first companies in Cyprus to certify our management system in accordance with the requirements of international Quality, Environmental and Occupational Health and Safety management system standards.

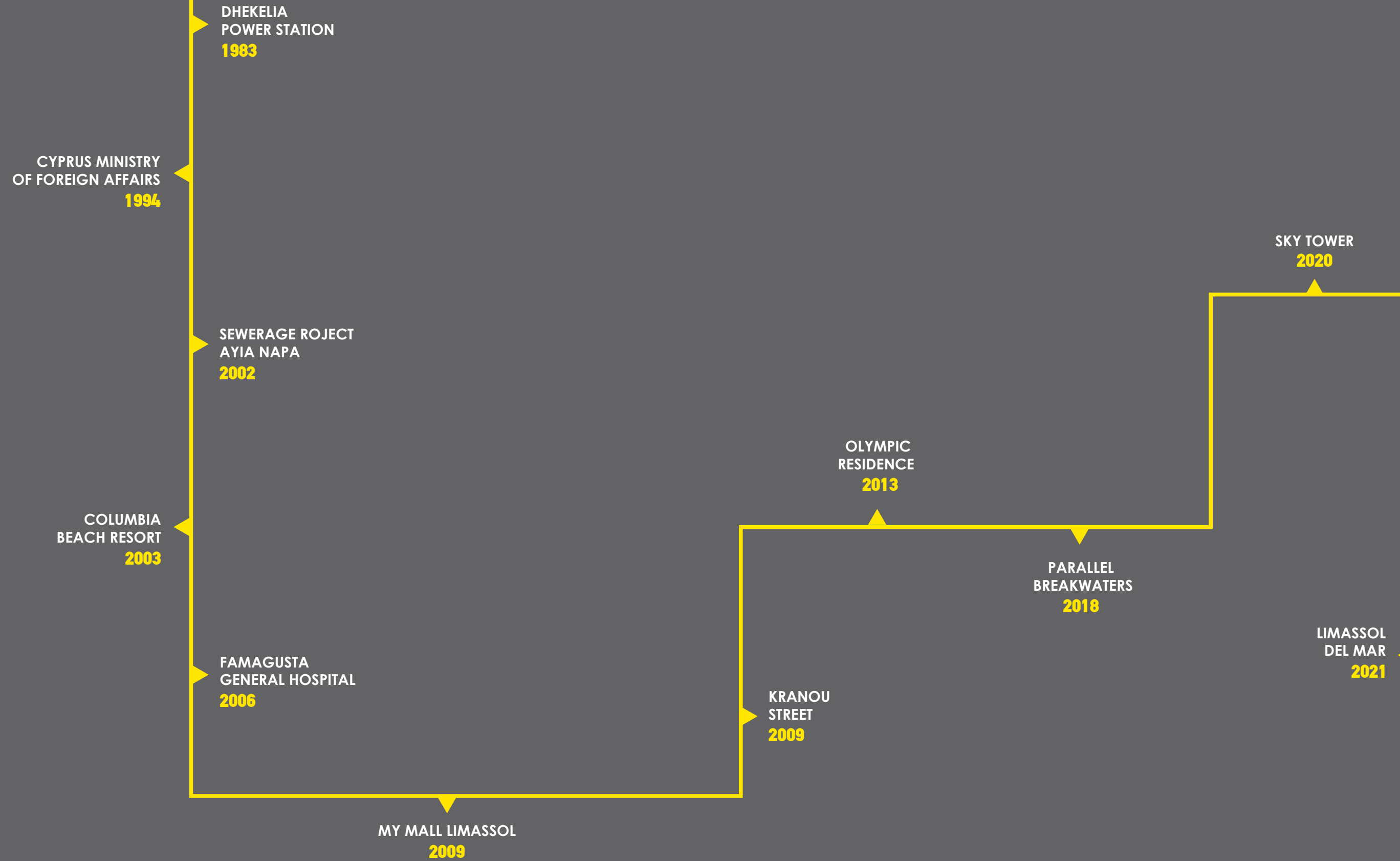


- **BS EN ISO 9001**
Quality Management System
- **BS EN ISO 14001**
Environmental Management System
- **OSHAS 18001**
Occupational Health and Safety Management System

We use these standards as a framework that enables us to document and improve our practices to better meet the needs and expectations of our clients, shareholders and interested parties. To ensure a common approach for the management of our performance with regards to environmental matters, as well as those regarding Health & Safety and Quality matters and to achieve continual improvement across all of Atlas Pantou, we focus on the systematic identification, management and improvement of the risks involved with our company's operations. This approach applies to the management of Environmental, Health & Safety issues throughout our company, as well as to the management of Quality issues that affect our management system, products and services.



Company Milestones



Residential Buildings

Residential buildings constitute one of the greatest challenges in structural engineering today. Atlas Pantou offers professional and high-quality residential construction services built on its vast experience, modern technology and the kind of warranty that you are looking for when you're investing in a place to call home.

Below you will find a small selection of our projects.

- Sky Tower
- Limassol Del Mar
- Olympic Residence
- Alexander Heights - Aphrodite Hills



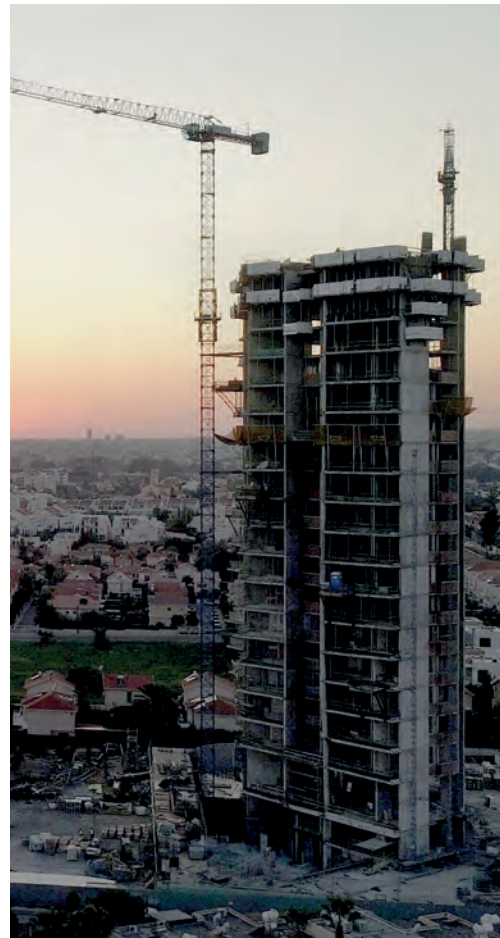
Start: 2018
Delivery: 2020

Sky Tower, Limassol

Luxury high-end apartments in a 23-store tower with hotel amenities that is being developed with the latest architectural and design trends. Situated only 300m from the sea, the apartment owners can enjoy the vast array of facilities that include incredible panoramic sea views, relaxing spa breaks, shared outdoor pool, heated indoor pool, fitness center, tennis court, fantastic evergreen gardens surrounding the tower and spacious underground parking. Sky Tower rests harmoniously on the cityscape of the Limassol tourist area thanks to its magnificent design by one of London's leading architectural agencies.

This 23-store challenging project has aluminum coating all over the outside. The remarkable thing about this construction is that the floor slabs, unlike the conventional ones, are post-tensioned. The post-tensioned slabs are designed to provide active reinforcement, making the building blocks even more efficient in terms of stability and economy in building materials.

Project executed in JV.



Start: 2018
Delivery: 2021

Limassol Del Mar, Limassol



Limassol Del Mar is situated less than 25m from the beach, on a plot of 34,000m² with its south side offering 170m of unobstructed sea views. Inspired by the gentle and curved waves of the Mediterranean in the south and from the low hills to the north, the unique sinusoidal curves of the project appear both in its center and on the floors with the curved walls creating a separate sculpture of approximately 40,000m². Clearly influenced by nautical architecture, the building reflects a large cruise ship, with the outer gardens of the summit standing proudly as the bridge and the command station. The first construction phase involves the delivery of the first two towers (A and B), with 13 and 18 floors respectively. The second phase involves the delivery of the apartments of the "Signature Collection" that is the eastern tower of 28 floors.

Project executed in JV.



Start: 2009
Delivery: 2013

Olympic Residence, Limassol

The tallest building in Cyprus from 2012-2018 (Wikipedia).

Located right on Limassol's beachfront, Olympic Residence consists of two 20-floor towers with breath taking views. This luxurious complex features 5-star hotel facilities which include swimming pools, a country club, a tennis court, a spa with a roman bath, a fitness club, a beauty salon, restaurants and boutiques.



A pedestrian bridge over the beach road connects the 2 towers with the beach. The building envelope of both towers is constructed using reinforced concrete and it is decorated throughout with stone, aluminium and glass.



Start: 2015
Delivery: 2019

Alexander Heights - Aphrodite Hills, Paphos

Aphrodite Hills is the first fully integrated golf, leisure and real estate 5* resort in Cyprus. It is nestled within 234 hectares of beautiful, unspoiled countryside. Alexander Heights, the 'Jewel of Aphrodite Hills', is situated in a very prime location inside the Aphrodite Hills within walking distance of all the resort's facilities, with stunning sea views.

Alexander Heights consists of 44 apartments and 34 luxurious villas. All properties are designed with attention to detail and to the highest quality standards including concealed air-conditioning/heating, Italian-style kitchen units, lavish Crème Royal bathrooms and marbles, home automation provisions and under floor central heating. All villas have their own infinity swimming pool and landscaped garden. Alexander Heights is not our first collaboration with Aphrodite Hills.



Our first collaboration dates back in 2005 with the construction of various luxury villas. Since then, other than the Alexander Heights project, Atlas Pantou has delivered more than 40 luxurious villas throughout the resort.



Office Buildings

Answering to the strong demand for high quality office space, Atlas Pantou offers high-end office building solutions, built to high architectural and environmental standards and exceptional quality protocols that take account of tomorrow's requirements as well as today's.

Below you will find a small selection of our projects.

- Cyprus Ministry of Foreign Affairs
- Interorient Navigation Headquarters
- Consulco Office Building
- SEK Headquarters



Start: 1991
Delivery: 1994

Cyprus Ministry of Foreign Affairs, Nicosia



The building is a 5-storey reinforced concrete structure. Its facilities include executive offices separated by demountable partitions, conference rooms, an auditorium, libraries, computer and storage rooms. All the external cladding of the building consists of a curtain wall and granite. The infrastructure works comprised of roads, parking facilities, street lighting and extensive well-made outdoor landscaping.

Start: 2007
Delivery: 2011

Consulco Office Building, Nicosia

Construction of a 3-storey office building with 2 levels of underground parking and archive areas. The facilities include a reception area, luxury offices, computer rooms, high-tech conference rooms and storage rooms. The building envelope is decorated throughout with stone and glass.



Start: 2007
Delivery: 2009

Interorient Navigation Headquarters, Limassol

The modern architectural design of the building is inspired by the sea and particularly from the waves.

The orientation of the building is towards the sea and Limassol's port due to Interorient's professional activity which is Navigation. This office building consists of a ground floor, 4 floors and a basement. Facilities include a reception area, luxury offices, various high-tech conference rooms, a pool area, a gym and parking areas for staff use on the basement.



Start: 1996
Delivery: 1998

SEK Headquarters, Nicosia

This 6-storey office building was constructed in reinforced concrete, brick walling and its external claddings consisted of local stone. Its facilities include offices, a conference centre, computer and storage rooms.

The infrastructure works comprised of roads, parking facilities, street lighting and extensive well-made outdoor landscaping.



Retail Buildings

Atlas Pantou rises to the challenges associated with a diverse building portfolio, bringing added value to every retail and commercial construction project, offering substantial construction experience, competitive pricing, financial strength and a passion to serve and embrace challenges.

Below you will find a small selection of our projects.

- MyMall Limassol
- Lidl supermarkets Aradipou, Ypsonas, Ormidia
- Mangas Home Improvement Store
- Galla Tower



Start: June 2007
Delivery: May 2009



MyMall Limassol

Shopping mall of approximately 40,000m² retail space with over 100 retail stores, 1,600 parking spots complete with underground ice-skating rink and bowling. Its construction was a fast track operation with continuous concrete pours, unheard-of in Cyprus, of 5000m³ which lasted for over 30 hours at a time.



Ypsonas
Start: May 2015
Delivery: Nov 2015

Ormideia
Start: Feb 2010
Delivery: Oct 2010

Aradippou
Start: July 2009
Delivery: Feb 2010



Lidl supermarkets in Ypsonas, Ormideia and Aradippou

Construction of 3 supermarket buildings of approximately 2,000m² each on behalf of Lidl Cyprus (Lidl is part of the Schwarz Group which is the fifth-largest retailer in the world). Each building is a reinforced concrete structure with block walls, metal crosses and metal roof panels. Works included the construction of the parking areas in paving blocks and macadam.



Start: Mar 2015
Delivery: Sept 2015



Mangas Home Improvement Store, Limassol

Construction of a structural steel DIY store and reconstruction and extension of an existing damaged underground basement. The works included excavations, concrete foundations, concrete structural members for the basement, structural steel frame, concrete floors and mezzanines, metal cladding dry walling, asphalt parking, fencing, electromechanical works, landscaping and other external works.



Start: 1997
Delivery: 1999



Gala Tower, Limassol

A prestigious 8-floor commercial development located in Makarios Avenue in Limassol, one of the most commercial streets of the city. This high-tech building consists of a variety of retail outlets on the ground, basement and mezzanine floors and with flexible office space on the remaining floors. An impressive external façade completes this prestigious development.



Hotels & Resorts

Atlas Pantou has successfully undertaken construction projects of tourist resorts to exceptionally high standards. Whether it's a five-star resort, an international brand, a full-service convention centre hotel or a local custom boutique hotel, Atlas Pantou has mastered the process of delivering properties on fast-track schedules to meet client goals, understanding the importance of a hotel's reputation to their guests and of a guest's experience.

Below you will find a small selection of our projects.

- Parklane Luxury Collection Resort & Spa
- Columbia Beach Resort
- Aldiana Beach Hotel
- Alion Beach Hotel

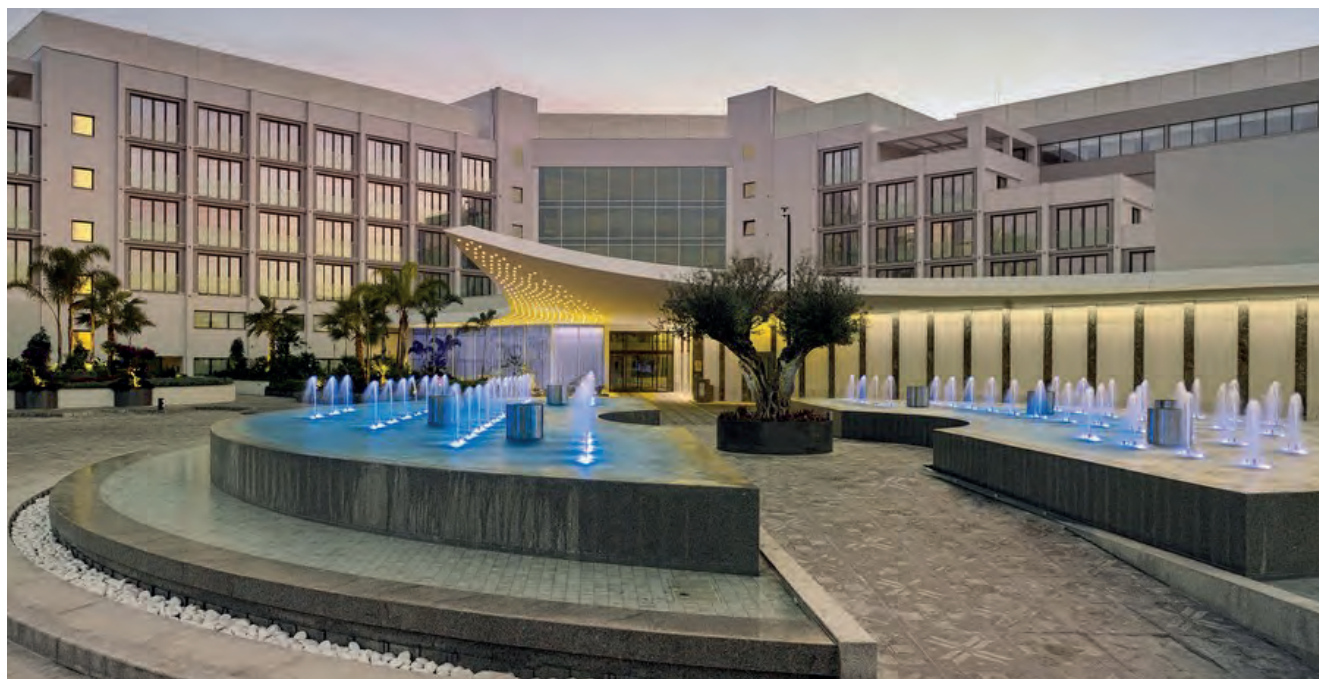


Start: 2015
Delivery: 2018



Parklane Luxury Collection Resort & Spa, Limassol

Located on 100,000m² of waterfront land and consisting of 53 suites, most with their own private pools, and 222 luxury guestrooms. Among the extensive facilities on offer, is a 2,000m² conference centre with a state-of-the-art 1,000m² theatrical Ballroom, 10 restaurant and bar outlets, a 2,700m² spa including 3 Russian Bagna suites and 3 beautifully designed outdoor swimming pools, including a seawater pool. In addition, there is also a Kids' Park consisting of a 400m² Castle, a lake with a Pirate Ship, water-games and a Kids' Restaurant.



Start: 2001
Delivery: 2003



Columbia Beach Resort, Pissouri

This luxurious 5-star resort was built on a hill facing the Mediterranean Sea. The architectural design is inspired by traditional Cyprus villages. It consists of 14 separate villas which facilitate the 169 guest suites and common areas which include restaurants and bars, an award-winning spa, sport facilities, swimming pools and a church. The infrastructure works of the resort included road and extensive landscape works and a bridge.



Start: 2002
Delivery: 2004



Aldiana Club Zypern

Sitting on a 78,000m² plot of land with direct access to the beach, this luxury resort facilitates 321 luxury guest rooms and suites, an indoor and an outdoor swimming pool, various sport facilities including a gym and 10 tennis courts, 2 restaurants, 2 bars, a spa, a hair salon, boutiques and conference rooms.

The infrastructure works comprised of private roads, parking facilities and extensive outdoor landscaping.

Project executed in JV.



Start: 1990
Delivery: 1992



Alion Beach Hotel, Ayia Napa

This tourist development located on one of Ayia Napa's sandy beaches, consists of a 7-storey building with an underground parking. Facilities include spacious reception areas, 100 modern guest rooms, 4 restaurants, a cafeteria, an outdoor swimming pool, 2 tennis courts and a fitness centre.



Hospitals & Health Centers

Healthcare projects demand the highest attention to detail. Whether building a new community hospital, or renovating an emergency room, navigating industry regulations, ensuring infection control and planning for rapidly changing medical technology, Atlas Pantou offers innovative and efficient healthcare building solutions, because there are no shortcuts in healthcare construction.

Below you will find a small selection of our projects.

- Famagusta General Hospital
- Melathron Agoniston
- The Princess Mary's Hospital,
British Sovereign Bases Akrotiri
- Ygia Polyclinic



Start: 2001
Delivery: 2005

Famagusta General Hospital, Paralimni



The project included the construction of various hospital buildings with all associated services. The extensive infrastructure works included road and landscape works, street and outdoor lighting, associated services, parking areas and a heliport.



Start: 1992
Delivery: 1994



Melathron Agoniston, Limassol

This medical institution was originally founded to serve as an old people's home but later developed as one of the best medical and rehabilitation centres in Cyprus. The project consists of a basement, ground floor and three floors with extensive infrastructure consisting of road works and services, parking facilities, gardens and footpaths. The facilities of the establishment include a large reception area, approximately 50 hospital rooms complete with all medical facilities, various medical units including an intensive care unit, staff areas, kitchen and restaurant facilities and an indoor swimming pool.

Start: 1992
Delivery: 1995

The Princess Mary's Hospital, British Sovereign Bases Akrotiri



The exterior works of the contract included repairs to the concrete facades using high pressure jetting techniques and specialised concrete materials. The interior works included extensive refurbishment works throughout the hospital. Other works of the contract included the installation of new lifts, the replacement of boilers, calorifiers, pumps and distribution pipework and the installation of piped medical gas distribution systems. The hospital was fully operational during the execution of works.

Project executed in JV.

Start: 2003
Delivery: 2007



Ygia Polyclinic

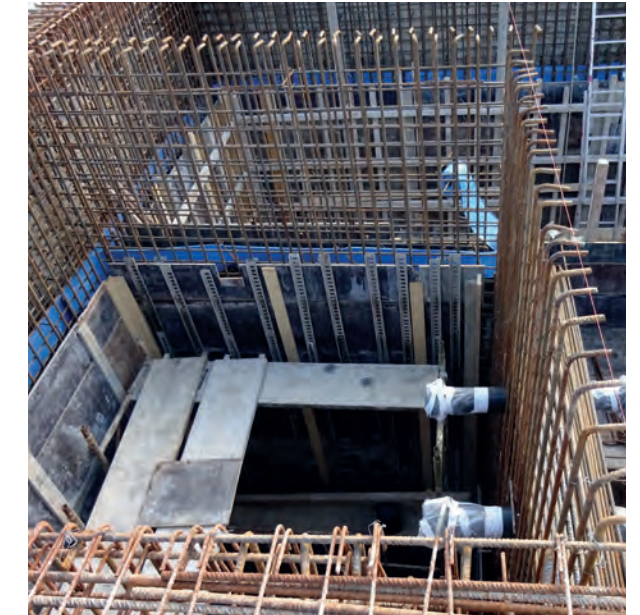
Construction of a 4-storey extension of the polyclinic and renovation of the existing building. The works of the contract also included the construction of a tunnel under the existing building. The Clinic was fully operational during the execution of works.

Technical / Civil Engineering Projects

Atlas Pantou offers a high level of technical construction expertise. Its civil construction operations possess the ingenuity and extensive experience required to undertake any civil structure imaginable, offering competitive pricing, integrity, commitment, quality and workplace safety. Atlas Pantou's success results from the commitment to maintain the principles on which the Company began and the vision of leadership throughout the years.

Below you will find a small selection of our projects.

- Dhekelia B' Power Station
- Pedestrian walkway Paralimni
- Christaki Kranou Street Germasogeia
- Parallel breakwaters
- Sewerage Projects
(Pafos, Larnaca, Nicosia, Paralimni, Ayia Napa)
- GSO Pedestrian bridge



Start: 1980
Delivery: 1983



Dhekelia B' Power Station

The Power Station consists of two 65 MW oil fired boilers and steam turbine alternator sets. Their main features include:

- 55x60x22 meters high turbine hall and annexes. The main hall roof has north-light trusses spanning 31 meters.
- Reinforced concrete cooling water culverts 15 meters deep.
- Reinforced concrete intake structure protected with breakwaters. Sheet piling is used to cut-off sea water.
- 1710m² of workshops, stores and other small buildings.
- A 3-storey, 600m², Administration building.
- Bases and other relevant structures for three oil tanks, with a capacity of 13,000 m³ each. Foundations of 132KV switchyard.
- Roadworks and area drainages.

Project executed in JV.

Start: 2010
Delivery: 2011



Pedestrian walkway Paralimni

Construction of a pedestrian walkway along the seashore of Protaras tourist area. To better blend the walkway to its natural surroundings part of it was finished with special tropical timber and part of it with an "exposed aggregate" concrete. The contract also included all electrical installations for streetlights and the construction of public restrooms.

Project executed in JV.



Start: 2004
Delivery: 2006



Christaki Kranou Street, Limassol

Reconstruction and redevelopment of Christaki Kranou street in Germasogia, Limassol. The project included all infrastructure works. Project executed in JV.

Start: 2016
Delivery: 2018



Parallel breakwaters in Pervolia and Larnaca

The two projects included the construction of parallel breakwaters with rock boulders positioned using floating cranes, barges and tag boats.

Project executed in JV.



Start: Since 1997
Delivery: Ongoing Projects

Sewerage, Drainage and pumping stations' projects

in Nicosia, Larnaca, Pafos, Paralimni and Ayia Napa

Starting from 1997, Atlas Pantou executed several sewerage, drainage and pumping station projects throughout Cyprus. These projects consisted of the installation of sanitary sewers, force mains, irrigation mains and stormwater drainage. The works included excavation works, sand bedding, pipe laying, havara backfilling, crusher-run road base and asphalt reinstatement as well as civil, electrical and mechanical works for numerous pumping stations and house connections.



Start: 2012
Delivery: 2013



GSO Pedestrian Bridge

A fair faced concrete construction with steel tube beams the combination of which creates the shape of a reverse trigonal. This revolutionary 25-meter-long pedestrian bridge design connects the athletic park of GSO (also constructed by Atlas Pantou) with the coastline, over Limassol's main beach road. The bridge was chosen by the Cyprus Architects Association to represent the island with nine other projects in the European competition 'Mies Van Der Rohe' in 2015. The competition takes place every 2 years and it is one of the most prestigious accolades in European architecture.



Restorations/ Renovations/ Upgrades

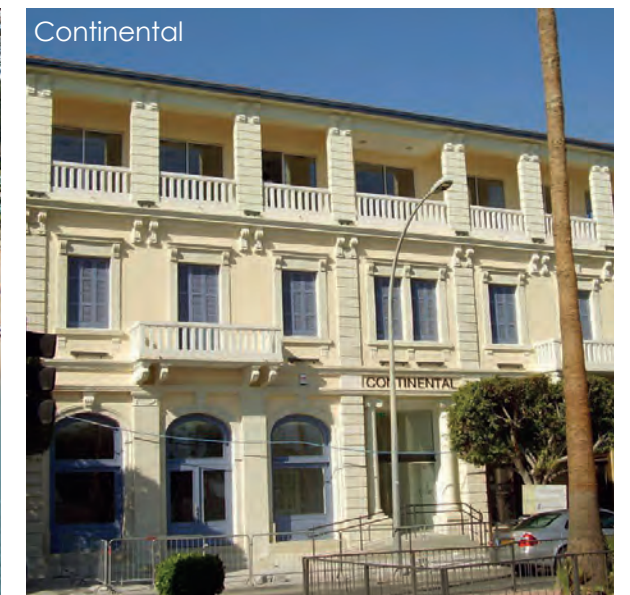
Atlas Pantou has executed numerous significant projects throughout the years that fall into this category. Below are a few examples of such projects:

Ygia Polyclinic: Our collaboration began in 1993 with the 4-storey extension of the polyclinic as well as the renovation of the existing building. The works also included the construction of a tunnel under the existing building. The clinic was fully operational during the execution of works. Most recent works include the construction of the MRI department, the ophthalmology department, the mammography department, extension and upgrade of the existing First Aid department and several staff area works.

Sunrise Beach Hotel: The luxurious hotel is ideally located on Protaras main beach road with direct access to the beach. The contract of this fast track project comprised of a hotel extension of 50 rooms spread over 3 floors, the construction of a restaurant and various external works.

American Academy, Larnaca: This private school is considered to be one of the best private schools in Cyprus. The works of this project included the seismic upgrade of the building structure, general upgrade of the school theatre and installation of new washrooms and upgrading of the existing ones.

Continental Hotel, Limassol: The project comprised of the conversion of one of Limassol's most historical hotels to be able to house the School of Economics and Management of Cyprus University of Technology (TEPAK). Today the old Continental Hotel is one of the oldest and most impressive buildings of Limassol.



Overseas Projects

The Atlas Pantou portfolio of works also include overseas projects in countries like Greece, Qatar, Bahrain and the United Kingdom through its affiliate companies Atlas Pantou Hellas, AtlasCat and Multistage International. Overseas projects include the following:

Projects in Al Rayyan and Al Wukair, Qatar: Construction of 237 and 123 villas respectively with auxiliary and communal buildings. Projects included all external and infrastructure works.

Stage and Studio Engineering projects: Several projects in the United Kingdom like the Lyric Theatre in Belfast, United Kingdom, The Royal Theatre in Thessaloniki, Greece and the Bahrain National Theatre.

Building projects in Greece: Several buildings throughout Athens.



Fox Hills, Lusail, Qatar



Lusail, Qatar



National Theatre, Bahrain



Royal College of Music, London



New Salata, Qatar



Kaisiriani apartment building, Athens



Zisiou Street apartment building, Athens



Al Rayyan, Qatar



Al Wukair

Additional Projects in Cyprus and Abroad



Aigle Apartment Building, Limassol



Aircraft Hangar, Paphos



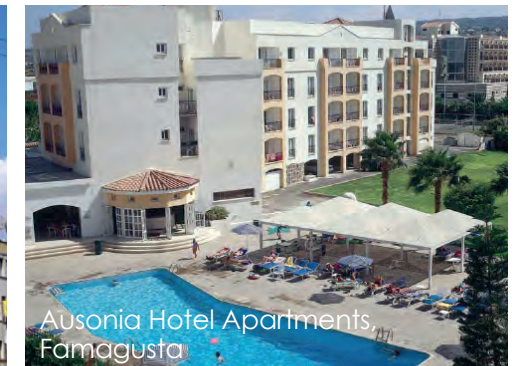
Melanos Village, Chloraka



Alexander Heights-Aphrodite Hills, Paphos



Kinaris Pyrgou offices, Nicosia



Ausonia Hotel Apartments, Famagusta



BBC Radio Theatre, U.K.



Pizza Express, Nicosia



Youth Information Centre, Nicosia



GSO Sports Center, Limassol



Frema Property building, Limassol



Grain Silos, Larnaca



Grand Park, Limassol



Harmony Residence, Limassol



Fire Station, Episkopi



Luxury Villa Aphrodite Hills, Paphos



Marlow Navigation Building, Limassol



New Salata, Qatar



Nicolaidis Sea View City, Larnaca



Fox Hills Lusail, Qatar



Private Residence, Limassol



Pegasus Beach apartments, Limassol



Primari School, Akrotiri



Rois Nicolaidis Commercial Building, Limassol



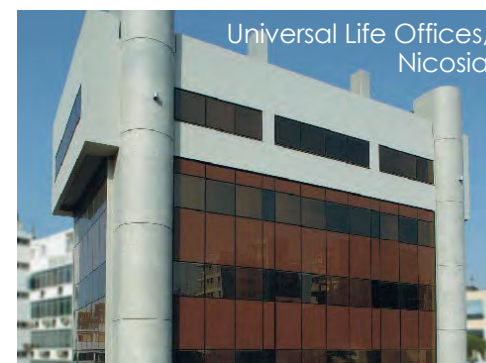
Savvas Agrotos building, Limassol



Sewerage & Drainage projects throughout Cyprus



Pan Complex, Paphos



Universal Life Offices, Nicosia



Truetrade Holdings, Limassol



Zavos Makariou Centre, Limassol

CONTROL TOWER LARNACA AIRPORT / CYPRUS RED CROSS BUILDING, NICOSIA / GRAIN SILO, LARNACA / REFUGE RESIDENCES, LARNACA / PREFABRECATED OFFICES LIMASSOL PORT AUTHORITY / STROVOLOS REFUGE RESIDENCES, NICOSIA / PREFABRECATED OFFICES NICOSIA POSTAL OFFICE CONTRACT CR/CON/4137 - DHEKELIA / PREFABRECATED MEDICAL OFFICES, NICOSIA / KLEA APARTMENT BUILDING, NICOSIA / PREFABRECATED PRIMARY SCHOOL, DASAKI AXNA / GRAIN SILO, MONI AMBROSIA OIL FACTORY, LARNACA / CYPRUS RED CROSS OFFICES, LIMASSOL / CYPRUS RED CROSS OFFICES, LARNACA / M. PAPAPETROU BUILDING, NICOSIA / PREFABRICATED STORES, LARNACA / CYPRUS RED CROSS OFFICES, PAPHOS / PREFABRICATED PRIMARY SCHOOL, AGIOS LAZAROS / PETROL STATION, NICOSIA / CYPRUS CEMENT WORKS, MONI / THALIA APARTMENT BUILDING, NICOSIA / ILISSOS APARTMENT BUILDING, LIMASSOL / MARY APARTMENT BUILDING, LIMASSOL / EAC SUBSTATION, NICOSIA / RAFFIS MODERN SHOE FACTORY, LARNACA / GREECE NATIONAL BANK BRANCHES, LIMASSOL / CULTURAL AND ATHLETIC CENTRE, LARNACA / CYPRUS RED CROSS OFFICES, LIMASSOL / ILIA APARTMENT BUILDING, LIMASSOL / ROAD WORKS KTIMATIKI A-P.T. LTD / MARKORA APARTMENT COMPLEX, NICOSIA / LARNACA AIRPORT WORKS / JERUSALEM BUILDING, LARNACA / DEMOFON APARTMENT BUILDING, NICOSIA / REFUGE HOUSES, POLEMIDIA LIMASSOL / EXTENSION FILIOS SYKOPETRITES FACTORY, LIMASSOL / MOBIL PETROL STATION, LIMASSOL / CORAL APARTMENT BUILDING, LIMASSOL / EXTENTION CUSTOMS OFFICE, LARNACA/IVISKOS APARTMENT BUILDING, NICOSIA / HITACHI HELLENIC FACTORY EXTENSION, LARNACA / VIALCO FACTORY, LIMASSOL / DHEKELIA B' POWER STATION / WATER BOARD OFFICES, LIMASSOL / PREFABRECATED CHURCH, AGIOS ATHANASIOS LIMASSOL / PREFABRECATED OFFICES WATER DEVELOPMENT, NICOSIA / PREFABRECATED TEACHING ROOMS 5TH STROVOLOS PRIMARY SCHOOL, NICOSIA / PREFABRICATED OFFICES FOR LAND REGISRTY OFFICE, NICOSIA / NAUSIKA HOTEL APARTMENTS, PROTARAS / SHELL PETROL STATION, LIMASSOL / NAVIMARE VILLA, NICOSIA / OFFICE BUILDING FOR CYPRUS TOURIST ORGANIZATION IN LARNACA MARINA / PREFABRICATED CHURCH IN AGIOUS ANARGYROUS, LARNACA / KEO LTD WORKS, LIMASSOL / PREFABRICATED OFFICES FOR THE NATIONAL GUARD, LARNACA / EXCAVATION WORKS FOR CYTA, LIMASSOL / EXCAVATION WORKS FOR CYTA, LARNACA / EXCAVATION WORKS FOR CYTA, NICOSIA / KAVOURI APARTMENT BUILDING, LIMASSOL / TIMAGIA APARTMENT BUILDING, LARNACA / PARALOS APARTMENT BUILDING, LIMASSOL / AVENUE PLAZA BUILDING, LIMASSOL / ROAD WORKS, DERYNIA / LYBIA EMBASSY RENOVATION, NICOSIA / MOBIL OIL OFFICES, LARNACA / MOBIL PETROL STATION, PAPHOS / PREFABRICATED BUILDING FOR J.V. SHEPHARD HILL - ZACHARIADES / MELONA APARTMENT BUILDING, NICOSIA / CYTA - FASOULA'S RELAY STATION, LIMASSOL / DOMA BUILDING APARTMENT BUILDING, LIMASSOL / PETROLINA PETROL STATION, LIMASSOL / FACILITIES FOR GRAPE DELIVERY, KEO LTD, LIMASSOL / CONSTRUCTIONS WORKS FASOULA RELAY STATION, LIMASSOL / PREFABRICATED RETAIL STORES, LARNACA / BP EPISKOPI PETROL STATION RESTORATION WORKS, LIMASSOL / SALAMIS TOURS LTD OFFICE BUILDING, LIMASSOL / AMMUNITION WAREHOUSES FOR CYPRUS NATIONAL GUARD / TSIRION STADIUM WORKS, LIMASSOL / SUNRISE HOTEL EXTENSION, PROTARAS / CYTA - ROAD WORKS FOR FASOULA'S RELAY STATION, LIMASSOL / CHURCH AT TSIKKILERO, LARNACA / CONTRACT FOR EXTENSION & ALTERATIONS TO M.M.G., AYIOS NICOLAOS, FAMAGUSTA / CARLSBERG LABORATORIES AND WAREHOUSES, NICOSIA / MEMNON APARTMENT BUILDING, LIMASSOL / CONCRETE WORKS AT CYTA WAREHOUSES, LIMASSOL / PREFABRECATED CHURCHES AT KOFINOU, MARI AND KLAUDIA / PREFABRECATED KINDERGARDEN, AGIOS PAVLOS PAPHOS / UPSTAND RING BEAM AT ROOF OF THE REPEATER STATION, AT KIONIA / RURAL FIRE STATIONS AT PACHNA, PAPHOS / CONSTRUCTION WORKS EAC SUBSTATION, NICOSIA / CYPRUS NATIONAL GUARD GUARDHOUSES THROUGHOUT CYPRUS / FIRE STATION AT EPTAGONIA / CYPRUS SAILING FEDERATION FACILITIES, LIMASSOL / MOBIL PETROL STATION, LIMASSOL / CYTA'S DIGITAL CENTRE, LIMASSOL / EAC LATSIA SUBSTATION, NICOSIA / AUSONIA HOTEL APARTMENTS, PROTARAS / ALION BEACH HOTEL, PROTARAS / DHIAZIZOS TUNNEL HOUSING COMPLEX ON BEHALF OF CYPRUS LAND DEVELOPMENT CORPORATION, NICOSIA / AVLIDA APARTMENT BUILDING, LIMASSOL / PASSENGER TERMINAL, LARNACA PORT / ETAL FACTORY, ERGATES NICOSIA / OMODOS WINERY, LIMASSOL / FLERY APARTMENT BUILDING, LIMASSOL / MELATHRON AGONISTON EOKA, LIMASSOL / KELI TOURIST COMPLEX, PARALIMNI / TOURIST APARTMENTS, PROTARAS / PEDESTRIAN WALKWAYS, LIMASSOL / COLUMBIA OFFICES EXTENSION, LIMASSOL / SEK HEAD OFFICES, NICOSIA / KLEIDES APARTMENT BUILDING, LIMASSOL / GALA TOWER, LIMASSOL / UNIVERSAL LIFE OFFICES, NICOSIA/ SUPPLY AND INSTALLATION OF A RESERVE OSMOSIS PLANT AT DHEKELIA GARRISON / COLUMBIA HARBOUR VILLAGE / SEK HEAD OFFICES / PIZZA EXPRESS NICOSIA / HANGAR PAPHOS AIRPORT / FAMAGUSTA GENERAL HOSPITAL / JACOVIDES TOWER, NICOSIA / 14 VILLAS IN APHRODITE HILLS / YGEIA POLYCLINIC / 8 VILLAS IN APHRODITE HILLS / DEVELOPMENT & HUMAN RESOURCES NICOSIA OFFICE EXTENTION / SEWERAGE AND DRAINAGE PROJECT IN STROVOLOS AND LAKATAMIA / BUNGALOWS IN AZIA BEACH HOTEL PAPHOS / MELANOS VILLAGE IN CHLORAKA / 4 VILLAS IN APHRODITE HILLS / OFFICE BUILDING KINANIS - PYRGOU IN NICOSIA / 1 VILLA IN APHRODITE HILLS / NICOLAIDES SEA VIEW, LARNACA / PAN COMPLEX GEROSKIPOU / FREMA PLAZA, LIMASSOL / IREON HOTEL APARTMENTS, LARNACA / RENOVATION OF PEGASUS BEACH APARTMENTS, LIMASSOL / GSO FOOTBRIDGE AND SPORTS FACILITIES / AIGLI APARTMENT COMPLEX, LIMASSOL / MESPECIOUS OFFICE BUILDING, NICOSIA / MY MALL, LIMASSOL / INTERORIENT NAVIGATION HEAD OFFICES LIMASSOL / PEDESTRIAN WALKWAYS ALAMINOS BEACH / PEFKOS VILLAS, ARGAKA / SEWERAGE AND DRAINAGE PROJECTS IN LATSIA AND GERI / LIDL ARADIPPOU / SEWERAGE AND DRAINAGE PROJECTS IN LIMASSOL / DESPOINA APARTMENT BUILDING, LIMASSOL / LIDL ORMIDEIA / OLYMPIC RESIDENCE / SAVVAS AGROTES OFFICE BUILDING, LIMASSOL / GLORIA JEANS COFFEE SHOP, LIMASSOL / ZAVOS MAKARIOU CENTER, LIMASSOL / RENOVATION CONTINENTAL HOTEL, LIMASSOL / TRUTRADE LTD BUILDING, LIMASSOL / SEWERAGE AND DRAINAGE PROJECTS XYLOTIMBOU AND ORMIDEIA / SEISMIC UPGRADE AMERICAN ACADEMY, LARNACA / MANGAS HOME IMPROVEMENT STORE, LIMASSOL / LIDL IPSONAS / PARKLANE, A LUXURY COLLECTION RESORT & SPA / ROIS NICOLAIDES COMMERCIAL BUILDING, LIMASSOL / ALEXANDER HEIGHTS, APHRODITE HILLS / SEWERAGE AND DRAINAGE PROJECT, LARNACA/ GRAND PARK APARTMENT COMPLEX, LIMASSOL / AENEAS GRAND VILLAS, APHRODITE HILLS / LIMASSOL DELMAR / SKY TOWER, LIMASSOL / HARMONY RESIDENCE APARTMENT COMPLEX, LIMASSOL / THE CORNICHE, LIMASSOL / MEDOCHEMIE MEDO B, LIMASSOL / GOLDEN MILE, LIMASSOL / ARARAT GRAND RESIDENCE, LIMASSOL / ACROPOLIS FAMILY RESIDENCES, NICOSIA / COMPLEX OF 8 LUXURY HOUSES, LIMASSOL / SEWERAGE AND DRAINAGE PROJECT C12A, LARNACA



www.atlaspantou.com

ATLASPANTOU CO LTD - Head office
8 Yiangou Tornariti Str. 3035 Limassol
T: +357 25828500, **F:** +357 25828501
E: headoffice@atlaspantou.com

Nicosia Office
5 Dinocratous Str. 1070 Nicosia
T: +357 22447474, **F:** +357 22447475
E: lefkosia@atlaspantou.com