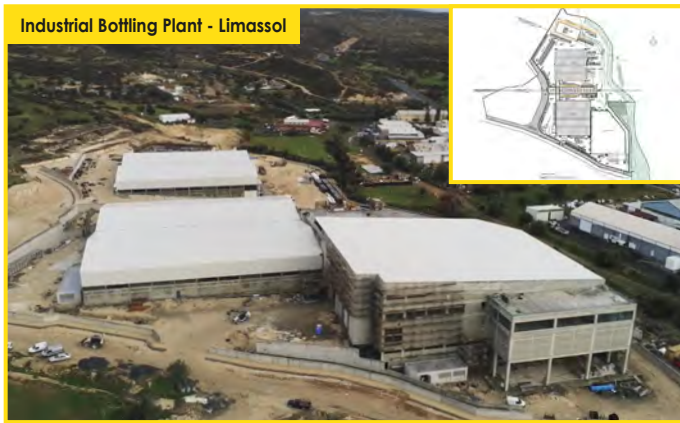


# PANTOUMAZI



# CONTENT

p.1	<b>INTRODUCTORY</b> NOTE
p.2	<b>RECENTLY COMPLETED</b> PROJECTS
p.7	<b>PROJECTS</b> IN PROGRESS
p.15	<b>NEW</b> PROJECTS
p.16	<b>BOOK</b> THE HISTORY OF CONSTRUCTION IN CYPRUS: FROM PREHISTORY TO THE 21ST CENTURY
p.21	<b>DOCUMENTARY</b> VAROSHA – EUROPE’S ENCLOSED TOWN
p.22	<b>CONFERENCES</b> / PRESENTATIONS / EVENTS / SPONSORSHIPS
p.25	<b>STAFF</b>

# INTRODUCTORY NOTE



Dear **ATLAS PANTOU** friends and associates,

We always valued our relationship, and it is our strong belief that close, honest and sincere and personal communication is very important especially in the field in which we operate.

As developments in our country progress, we believe by using the technology we established a more direct communication channel with you. This is actually the reason we created the **ATLAS PANTOU** Newsletter.

Finally, we want to wish everyone a Happy New Year 2024 with personal, family and professional successes with Health above all else.

Following is our latest news for the period October to December 2023.

Kind regards,  
**ATLAS PANTOU**

1

# RECENTLY COMPLETED PROJECTS



## Sky Tower, Limassol

**Project Description:** Luxury high-end apartments on a 23-store tower with hotel amenities developed with the latest architectural and design trends. Situated only 300m from the sea, the apartment owners can enjoy the vast amenities of the facilities that among others include incredible panoramic sea views, relaxing spa breaks, shared outdoor pool, heated indoor pool, fitness centre, tennis court, fantastic evergreen gardens surrounding the tower and spacious underground parking. Sky Tower rests harmoniously on the cityscape of the Limassol tourist area thanks to its magnificent design by one of United Kingdom's leading architectural agencies. This 23-store challenging project has aluminium coating all over the outside. One of the remarkable things about this construction is that the floor slabs, unlike the conventional ones, are post-tensioned. The post-tensioned slabs are designed to provide active reinforcement, making the building blocks even more efficient in terms of stability and economy in building materials.

The project was developed on behalf of **Prime Property Group**.

**Architects:** UHA London and Panos Panayiotou & Associates, PPA.

**Q.S.:** PMI (Project Management International).

**Electromechanical Consultants:** Alexis S. Stavrou & Associates.

**Structural design:** A.J. Pericleous LLC

**Contractor:** Joint Venture between Atlas Pantou Co Ltd and Man Enterprise (Atlas Pantou - Man JV).



2

# RECENTLY COMPLETED PROJECTS



## New LIDL store in Ayios Athanasios, Limassol

**Project Description:** The works of the project included demolition works of all existing buildings and the construction of a new LIDL store of an internal area of around 2,200m<sup>2</sup> with a metallic roof of around 3% inclination, external thermal facade and shading at the entrance. External works included parking spaces with shades, road and sidewalk works around the perimeter of the store, installation of the various services and the configuration of a green area/park.

Worth mentioning is the fact that the project was completed within its very tight time schedule of 7 months.

The project was developed on behalf of **Lidl Cyprus**.

**Architects:** Stamatoukos, J., Technical - Studies S.A.

**Q.S.:** Christos D. Ioannou Construction Cost Consultants LLC

**Electromechanical Consultants:** Dicom Services Ltd (Vrasidas Mavroudis)

**Structural design:** Papargyris G. – A. Kardoula O.E.



3

# RECENTLY COMPLETED PROJECTS



## Acropolis Family Residences, Nicosia

**Project Description:** A 6-storey apartment complex with 8 luxurious apartments. The two top floor apartments, which are duplex penthouses, have their own private roof gardens with a barbeque area, a private pool and an office. Apartment owners can also enjoy a private swimming pool which is located on the semi- open 1st floor. The project was developed in the prestigious area of Acropolis in Nicosia.

The project was being developed on behalf of **Cyagama Ltd.**

**Architects:** Photiou Architects

**Q.S.:** Andreas Polycarpou

**Electromechanical Consultants:** Primedesign Consulting Engineers Ltd.

**Structural design:** George Kolonias



# RECENTLY COMPLETED PROJECTS



## Limassol Del Mar, Λεμεσός

**Project Description:** Developed less than 25m from the beach, on a plot of 34,000m<sup>2</sup> with its south side offering 170m of unobstructed sea views. Inspired by the gentle and curved waves of the Mediterranean in the south and from the low hills to the north, the unique sinusoidal curves of the project appear both in its center and on the floors with the curved walls creating a unique sculpture of approximately 40,000m<sup>2</sup> covered areas. Clearly influenced by nautical architecture, the building reflects a large cruise ship, with the outer gardens of the summit standing proudly as the bridge and the command station. The first construction phase involved the delivery of the first two towers (A and B), 13 and 18 floors respectively. The second phase involved the delivery of the apartments of the "Signature Collection", that is the eastern tower of 28 floors.

**Developers:** Cypeir Properties Ltd (a partnership between Leptos Group and D. Zavos Group).

**Architects:** Benoy and UDS Architects Antoniadēs & Eleftheriou.

**Electromechanical Consultants:** Unemec.

**Q.S.:** Christoforides Makris & Partners Ltd.

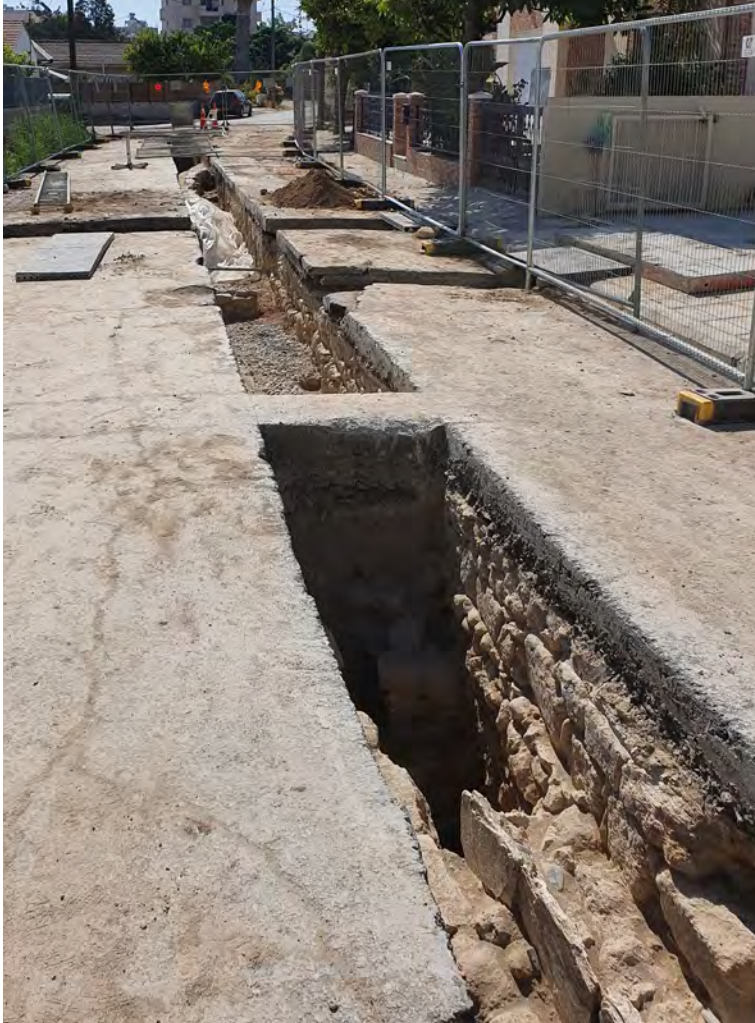
**Structural design:** Andros Achilleos - ASD Hyperstatic Engineering Design

**Contractor:** AMIC Contractors (Joint venture between Atlas Pantou Co Ltd - leader, Man Enterprise, ICM Group, CMB Societa Cooperativa)



5

# RECENTLY COMPLETED PROJECTS



## Larnaca Sewerage & Drainage project C12A

**Project Description:** The contract included the investigation, management and cleaning up of trenches from antiquities, existing services, and any other obstacles in order to determine the final route of the future sewerage and drainage system.

The project was executed on behalf of **LARNACA SEWERAGE & DRAINAGE BOARD**.



6



# PROJECTS IN PROGRESS



## Ararat Grand Residences, Limassol

**Start date:** December 2019

**Project Description:** Luxury high-end apartments on a 23-store tower with hotel amenities. The project is being developed along the beach road of Parekklisia area, in one of the most prestigious areas of Limassol. This unique high-rise building consists of only 15 luxurious apartments and a 5-floor, 8-bedrooms penthouse. At road level there is a grand plaza leading to a gourmet restaurant, professional SPA, sauna, hammam, massage room, heated pool in a cave style enclosure, cigar lounge and a VIP bar for club members, wine cellar and jewelry boutique. At this level there is also a parking area for residents (36 spaces) as well as a separate parking for restaurant and commercial area visitors and guests (40 spaces). On the first floor there is the entrance lobby and reception on two levels. On the grounds of the complex (about 8.000 m<sup>2</sup>) there is a half-Olympic size (25x10m) mosaic swimming pool with a bar, tennis court, park, and a playground. The project's grounds are enclosed with a secure fence, and a 24-hour video surveillance.

The rest of the building consists of the following:

- 3rd and 4th floors: apartments.
- 5th floor: Garden Terrace with a healthy-food concept restaurant (internal finishing works will be executed by others).
- 6th-8th floors: apartments.
- 9th floor: Restaurant with panoramic sea views (internal finishing works will be executed by others).
- 10th -12th floors: apartments.
- 13th-14th floors: Continuation from ground level of the Wellness zone and Spa including an indoor Roman style heated pool (internal finishing works will be executed by others).
- 15th -17th floors: apartments.
- 18th-23rd floor: 8-bedrooms penthouse apartment with private elevators, a roof garden and a private swimming pool.

Regarding the progress of works, all the works inside the apartments (except the works of the apartment on the 17th floor which can't be concluded because of the site's Tower crane location) and all the common areas are concluded. The tower's façade cladding works are also concluded except again of the area that it is affected by the location of the site's Tower crane.

The project is being developed on behalf of **Maserdo Ltd.**

**Architects:** Photiou Architects

**Q.S.:** Andreas Polycarpou

**Electromechanical Consultants:** Primedesign Consulting Engineers Ltd.

**Structural design:** George Kolonias

7

# PROJECTS IN PROGRESS



## Waterwork Vasilikos – Nicosia, Phase A': Construction of sub-project C1, Pipeline Nisou – Nicosia

**Start date:** September 2021

**Project Description:** This important sub-project is part of the large water project Vasilikos-Nicosia which aims to transport water from the Vasilikos Desalination Unit to Nicosia and will be a second major source of water supply in the wider Nicosia area. The contract includes the installation of malleable cast iron pipelines, 800mm and 700mm in diameter and total length of 16.9KM.

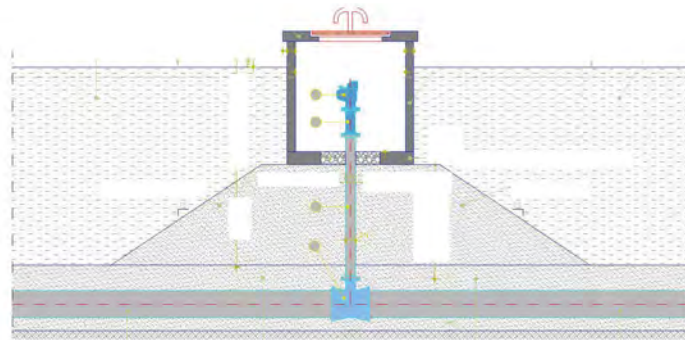
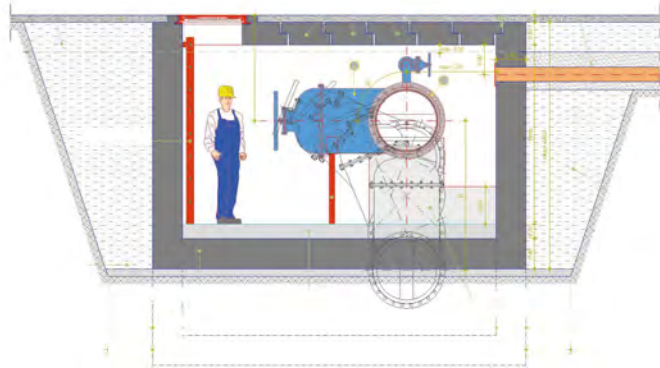
The works regarding the installation of malleable cast iron pipes, that started by the highway exit towards the Kotsiatis village and finished at the Water Development Department tank in Tseri, are concluded.

The works regarding the construction of the project's associated manholes and the necessary water pressure tests are also completed. Currently, ongoing are the associated works regarding the final delivery of the project.

The project is being executed on behalf of the **Water Development Department**.

**Architects/Consultants:** Dion. Toumazis & Associates

Karavokyris, G., & Partners Consulting Engineers S.A.



# PROJECTS IN PROGRESS



## Construction of flood protection works-contract F8, Limassol

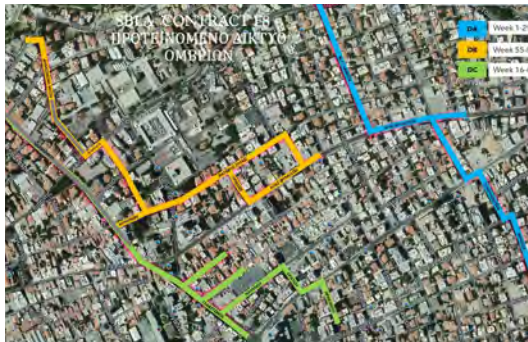
**Start date:** January 2021

**Project Description:** The project is demarcated south of Makarios Avenue, east of the river Garyllis, west of Agias Zoni Street and north of Gladstonos and Navarinou Streets. The works include the construction of three main collectors for diverting rainwater to the Garylli riverbed. This is a project with an extremely high degree of difficulty, as it provides extensive excavation works on 27 streets in the center of Limassol, many of which are main commercial streets with increased traffic and commercial activity.

The works on Therissou, Vassilis Michailidis, Stavroforon, Ioustinou, Idaliou, Orfeos, Victor Hugo, Lanitis, Thessalonikis, Dodekanisou, Beyazit, Ayias Fylaxeos, Leontiou Machaira, Eracleous, Filiou Zannetou, Voreiou Ipeirou, Pekinou, Navarinou, Oratiou, Makriyianni, Naupliou, Demostheni Mitsi, Irene, Ellados, Christodoulou Papadaki, Mykinon and Ayiou Spyridona streets have been completed. The only remaining roadworks are in Gladstonos street which are currently in progress. Moving towards project completion, the works regarding the construction of boundary walls and gabions around Garylli's riverbed are also close to completion.

The project is being executed on behalf of **LIMASSOL AND AMATHOUNTA SEWERAGE & DRAINAGE BOARD**.

**Consultants (Study – Supervision):** Joint Venture: Z&A P. Antonaropoulos & Associates and ROIKOS Engineering Consultants SA



# PROJECTS IN PROGRESS



## Construction of the 'Neapolis Project' in Limassol

**Start date:** June 2022

**Project Description:** A four-storey residential building with 16 modern and stylish apartments of covered area around 2,500m<sup>2</sup>. The building has 6 levels (Ground floor, 1st floor, 2nd floor, 3rd floor, 4th floor and a roof garden). Each of the 4 floors has 4 apartments. The residents of this luxurious project can enjoy a private pool which is located at the roof garden. Part of the façade will feature ELVA aluminium cladding.

Regarding the progress of works, the building's foundation and concrete works are concluded. Now the works concentrate on the brickworks, waterproofing, plastering and finishing works on all 6 levels of the building. The electromechanical works are also progressing, again in all the building's levels.

The project is being developed on behalf of **Swift Global Ltd.**

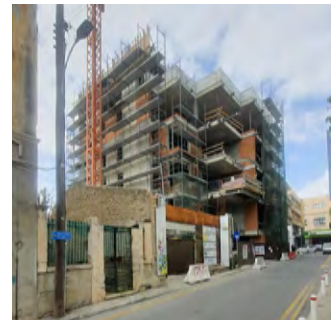
**Architects:** Panos Panayiotou + Associates

**Civil Engineer:** Advanced Civil Engineering Solutions

**Q.S.:** Efthymios Andreou & Associates Ltd

**M.E.P. (Mechanical, Electrical, Plumbing) Consultants:** K. Karantonis Partners LLC

**Structural design:** Advanced Civil Engineering Solutions



# PROJECTS IN PROGRESS

## Industrial Bottling Plant, Limassol

**Start date:** August 2022

**Project description:** The project consists of the construction of 3 independent Industrial Buildings built in a plot of around 20,000m<sup>2</sup>. The Bottle Decoration building is a 2-floor building with a reinforced concrete frame and a metal roof. The Bottling Plant and the Storage buildings are metal/industrial buildings. The works of the project also include construction of retaining walls, a tunnel, and various 0external works including parking areas, roadworks, and services.

Regarding the progress of works with respect to the Storage Building, the works are completed and currently waiting for the EAC inspection to start the delivery procedure of the Building to the client.

In respect to the Bottle Decoration building works, the foundation and concrete works, the brickworks, the finishing works for the whole building, the office space works on the 1st floor and the roof works are concluded. Currently the works are concentrated on finishing the electromechanical works and at the same time the client is working on the installation of the production line equipment.

In respect to the Bottling Plant's works, the works are concluded, and currently waiting for the EAC inspection to start the delivery procedure of the Building to the client. The client is simultaneously working on the installation of the production line equipment.

In respect to the external works of the project, the works regarding the 4 EAC substations are concluded, and the substations are delivered. The works regarding the construction of the perimeter walls are also completed. Currently the works concentrate on the external services and finalizing the external works. The works regarding the Wastewater Treatment station, are also close to completion.

The project is being developed on behalf of **BOUTIQUE BEVERAGES BOTTLING INTERNATIONAL LTD.**

**Architects:** P. Papadopoulos & Associates Consulting Engineers LLC

**QS:** P. Papadopoulos & Associates Consulting Engineers LLC

**Electromechanical Consultants:** Karantonis Partners LLC

**Structural design:** PPA Engineers



# PROJECTS IN PROGRESS



## Palisandro Hills, Paphos

**Start date:** September 2022

**Project description:** A club township consisting of 18 luxurious villas with private swimming pools and their associated road and other external works, including an orchard and a playground. Its design combines a careful attitude towards nature aiming at the same time to create an uncompromisingly comfortable living environment. The general arrangement of the built-up area features two lines of land plots along the valley, making good use of the height difference, recessing the villas located along the valley into the mountain in order to preserve the picturesque panoramic views from the villas situated on the western line.

Palisandro Hills is in Peyia village, Paphos. Its premium location next to a mountain river and a national park guarantees to future residents' spectacular views of the mountains and coastline.

Regarding the progress of works, the excavation and earthworks of all the villas are long concluded. The foundation, the structure works, the brickworks, the waterproofing and plastering works for the 16 villas are also concluded. Instructions are pending from the client regarding the construction of the remaining 2 villas. Now the works concentrate on the finishing works and the external thermal façade of the 16 villas.

Regarding the external works of the villas, the stone border walls are completed. The structural works of 10 villas' swimming pools are also completed. Works are currently concentrated on the villas' entrance areas (garage, covered parking spaces etc) with 11 out of the 16 to be already completed.

Regarding the external works of the project, the associated Sewage and rainwater collector systems' works as well as the Sewerage treatment plant works are concluded. The associated EAC substation works are also completed. The external works of the public road are completed and currently waiting for the associated plans to start working on the construction works of the private roads.

The project is being developed on behalf of **INEX GROUP**.

**Architects:** Simpraxis Architects LLC and Antreas Ioannou Architects as of June 2023

**QS:** MDA Cyprus LLC

**Electromechanical Consultants:** DoubleN Electrical Consulting Engineering LLC (Electrical) and Emech Engineering - Kikis Hadjifrangiskou (Mechanical)

**Structural design:** Antoniou Andreas



# PROJECTS IN PROGRESS



## American University of Beirut – Mediterraneo campus, Paphos

**Start date:** September 2022

**Project description:** The American University of Beirut (AUB) is one of the MENA (Middle East and North Africa) region's oldest and most prestigious institutions of higher education. It will be its first campus outside Lebanon. The project consists of the construction of campus' Administration building, the Classrooms' building and the Auditorium & Facility building along with the associated external works.

The Administration building is located at the west front side of the developing plot adjacent to the main access road. It consists of the university administration staff and professors' offices with their services including an entrance lobby, vertical and horizontal circulations, elevators lobby, restrooms, pantries, electric/telecom rooms, a data centre, offices and meeting rooms. The building is distributed on a ground and 3 other floors with an overall gross building area of around 4,270 m<sup>2</sup>.

The Classrooms' building is located at the east back side of the developing plot. It consists of all the classrooms and spaces related to students with their services including an entrance lobby, vertical and horizontal circulations, elevators lobby, laboratories, study rooms, restrooms, electrical and telecom rooms. The building is distributed on a ground and 3 other floors with an overall gross building area of around 4,850 m<sup>2</sup>.

The Auditorium & Facility building is located adjacent to the Administration building at the south side of the developing plot. It consists of the campus' facilities and MEP (Mechanical, Electrical and Plumbing) spaces including the Auditorium, a snack bar, water tanks and pump rooms, storages, electrical main rooms, a generator, and maintenance staff offices. The building is distributed on a basement, a ground, and a mezzanine floor with an overall gross building area of around 2,100 m<sup>2</sup>.

The Administration and the Classrooms' buildings is linked with an open colonnade at ground level with an overall gross building area of around 425 m<sup>2</sup>. An electrical sub-station and several storage areas with an overall gross building area of around 230 m<sup>2</sup> are constructed under the bleachers between the Auditorium & Facility and Classrooms' buildings.

Regarding the progress of works, the excavation and earthworks of the whole project are long completed. Administration building works: The steel support works for the monument building are concluded and works currently concentrate on the renovation works. Foundation works as well as concrete works for all 3 floors are long completed. The works regarding the finishing works of all building's floors (Ground, 1st, 2nd and 3rd floors) are progressing with 80% of the works to be already completed. Regarding the Building's façade, 25% of the works are already completed. The works on the rehabilitation of the old historic are 80% completed. The roof works are around 40% completed. The electromechanical works are also progressing with 70% of the works to be already concluded.

The Classrooms' building works: The foundation works as well as the concrete works of the Building are long concluded. The finishing works of all building's floors (Ground, 1st and 2nd floors) are 85% completed, the works regarding the Building's façade are 60% completed and the roof works are 50% completed. The electromechanical works are also progressing with 85% of the works to be already concluded.

The Auditorium & Facility building works: The foundation and concrete works for the Basement, Ground, 1st and roof floor are long completed. The finishing works of all building's floors (Basement, Ground and 1st floors) are 60% completed, the works regarding the Building's façade are 80% completed and the roof works are 50% completed. The electromechanical works are also progressing with 70% of the works to be already concluded.

Sub-station works: All the works are long completed and already inspected and handed over to the EAC authorities. Regarding the external works of the project, the infrastructure works are completed, and the landscape works are 25% completed.

The project is being developed on behalf of the **American University of Beirut**.

**Architects:** Dar Al-Handasah Consultants (Lebanon) and Antreas Ioannou Architects (local)

**QS:** N/A

**Electromechanical Consultants:** Dar Al-Handasah Consultants

**Structural design:** Dar Al-Handasah Consultants (Lebanon) and Antreas Ioannou Architects (local)

**Contractor:** Joint Venture between Atlas Pantou Co Ltd and Man Enterprise (Atlas Pantou - Man JV).

# PROJECTS IN PROGRESS



## Limassol Greens – Robin West and Robin East Residential Buildings, Limassol

**Start date:** March 2023

**Project description:** Limassol Greens is one of the largest master planned developments in the city of Limassol. AECOM, the world's premier infrastructure firm, designed a masterplan that ingeniously sets the residential and commercial units in the centre of the resort development, surrounding them with golf greens and fairways on all sides. Developed over an area of 1.4 million m<sup>2</sup> Limassol Greens entails an 18-hole championship golf course with a state-of-the-art clubhouse, 500 villas and 250 apartments to be developed in phases, retail and commercial facilities including shops, restaurants, bars, a Wellness Centre with an outdoor pool, spa treatment facilities, fitness area, yoga and meditation lawns, tennis, basketball courts and cycleways, children's playgrounds, an open-air amphitheatre and a herb garden.

The Robin Apartments consist of two blocks, Robin West and Robin East, the construction of which is executed by ATLAS PANTOU, set out over a basement, a ground floor and three storeys, served by two separate spacious lobby areas with their own lift. Each apartment block covers around 6,030m<sup>2</sup> and consists of 26 luxurious 2 and 3-bedroom apartments.

Located in the heart of the resort, within a minute's walk from The Village and The Clubhouse, the Robin Apartment buildings are the only buildings tall enough to enjoy unparalleled views over the Golf Course and up to the Salt Lake, the forest and the sea. The chic and practical interiors combine carefully crafted layouts that work hard to maximise the interior spaces while ensuring the focus remains on the generous terrace and views beyond.

Regarding the progress of works of the Robin West building, the excavation, earth, dewatering works, the construction of the base slab and perimeter walls are long concluded. Completed are also the works regarding the construction of the slabs and columns of the Basement, Ground and 1st floors, as well as the brickworks of the Basement and Ground floor. Currently the works are concentrated on the construction of the 2nd floor slab and waterproofing, plastering and painting works on the Basement and Ground floor.

Regarding the progress of works of the Robin East building, the excavation, the earth and dewatering works and the construction of the Basement slab are concluded.

The project is being developed on behalf of **LANITIS GOLF PUBLIC CO LTD.**

**Architects:** HKS Architects (USA), J+A Philippou Architects - Engineers

**QS:** Yioula Michaelidou - M.Y.QS Services LTD

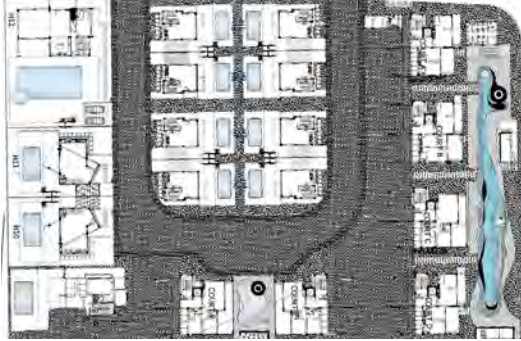
**Electromechanical Consultants:** GEMAC Consultancy Services Ltd

**Structural design:** PPA Engineers (Panos Papadopoulos)





# NEW PROJECTS



## Citrine Estates, Limassol

**Start date:** January 2024

**Project description:** Construction of 11 luxurious high-end villas and 7 apartment buildings consisting of 35 one-bedroom and two-bedroom apartments with a covered gross floor area of over 5,500m<sup>2</sup>, along with the associated external works. The external works include private roads with the associated external services such as surface drainage, drainage, electricity & lighting, telephone, water supply and irrigation, construction of sidewalks and swimming pools.

Developed on a plot of around 90,000m<sup>2</sup> near the casino-resort City of Dreams Mediterranean, Citrine Estates promises to be a key international destination for luxury living and hotspot for real estate investors. Investors will not only acquire prime real estate, but they also will also acquire unrivalled access to holistic living that delicately combines natural beauty and luxury lifestyle. The project is located amid the majestic Akrotiri Peninsula, allowing residents to revel in the tranquillity of nature while surrounded by the abundant birdlife, fragrant orange groves and wild eucalyptus trees that characterize its unique landscape. At the same time, the project's proximity to the city offers easy access to the rich and multicultural lifestyle that has made Limassol the cosmopolitan capital of Cyprus.

The project is being developed on behalf of **Moenez Holding Services Ltd** member of **CNS** Group.

**Architects:** Sotiris Agapiou Services Ltd.

**Electromechanical Consultants:** Building Services Consulting Engineers / Michael Mouskoulli.

**Q.S.:** C. Kypridemos QS Consultants Ltd.

**Structural design:** Sotiris Agapiou Services Ltd.



# BOOK

## THE HISTORY OF CONSTRUCTION IN CYPRUS: FROM PREHISTORY TO THE 21ST CENTURY



Famagusta Municipality Library



Russian Cultural Center Library



TEPAK University



Limassol Public Library

The Atlas Pantou Group, boasting 80 years of history, is an important chapter of the construction industry in Cyprus. With respect for the art of construction, as well as our land and culture, two years ago it set a grandiose plan, to publish the first comprehensive book on the history of Construction in Cyprus, with the main goal of contributing to our island's culture.

The book "The History of Construction in Cyprus: From Prehistory to the 21st Century" unfolds just that, the history of Construction in Cyprus from the dawn of human civilisation to the 21st century.

A select group of 10 scientists-researchers, based on modern research on the history, archaeology, and architecture of Cyprus, has written down the raw materials, the techniques, and the construction forms in their diachronic course through the political, social, financial, and cultural changes on the island.

Abundantly illustrated and with a glossary of technical terms, this bilingual edition (greek and english) aspires to be an essential handbook for both experts and non-experts of the past and modern-day generation.

More information about the book can be found on our website [www.atlaspantougroup.com](http://www.atlaspantougroup.com) / **Who We Are / Our culture** or by clicking [HERE](#). Also, the book is **exclusively** available for anyone who wishes to purchase it through our website [www.atlaspantougroup.com](http://www.atlaspantougroup.com) / **Who We Are /Our Culture**, or by clicking [HERE](#).

# BOOK

## THE HISTORY OF CONSTRUCTION IN CYPRUS: FROM PREHISTORY TO THE 21ST CENTURY

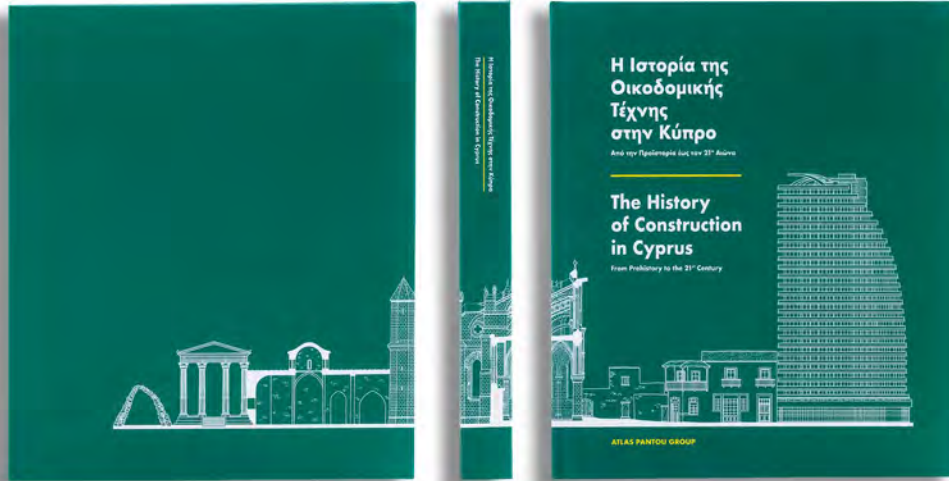
Atlas Pantou Group started with the donation of the publication "The History of Construction in Cyprus: From Prehistory to the 21st Century" to the following libraries:

- ✓ University of Cyprus – Learning Resource Centre UCY Library "Stelios Ioannou"
- ✓ Library of TEPAK University
- ✓ Library of University of Nicosia
- ✓ Library of Frederick University
- ✓ Library of European University
- ✓ The Cyprus Institute
- ✓ Cyprus Library
- ✓ Elpinikios Library
- ✓ Library of the Department of Antiquities
- ✓ Russian Cultural Center Library
- ✓ Achillios Municipality Library
- ✓ Archeological Research Library
- ✓ Press & Information Office Library
- ✓ Municipal Art Centre Library
- ✓ Library KEBE (Cyprus Chamber of Commerce and Industry Library)
- ✓ Cyprus Productivity Center (CPC) - Mediterranean Institute of Management Library
- ✓ CYS: Cyprus organization for Standardization Library (CYS)
- ✓ Cyprus-American Archaeological Research, Institute Library (CAARI)
- ✓ Limasol Public Library
- ✓ Strovolos Municipality Library
- ✓ Famagusta Municipality Library

ATLAS PANTOU will also proceed with the donation of the book to libraries/ university libraries abroad.

# BOOK

## THE HISTORY OF CONSTRUCTION IN CYPRUS: FROM PREHISTORY TO THE 21ST CENTURY



### Foreword by Mr. Tonis Toumazis, Founder of ATLAS PANTOU Group

From cave dwelling to the first stone and timber structures, from clay to concrete and iron, man has not stopped evolving. Once, in the distant past, we gazed at the skyline from the port of ancient Salamis. Today we gaze at it from the balconies of skyscrapers, watching merchant ships, cruise ships, and hydrocarbon mining platforms plough the seas of our island.

As a businessman and civil engineer, I have always admired the art and science of building. Universities taught me how to methodically apply its techniques and principles, but it was my father, Panayiotis Toumazis who taught me its moral code.

Many years ago, in 1937, he established his first construction office in Famagusta. This

would be the cornerstone of the construction company that followed and the group of companies that developed later on.

The journey throughout the years has proven very challenging. The 1974 Turkish invasion inevitably affected the companies of the group, leading some of them to near closure. We lost Famagusta and our properties, yet we never lost the courage to continue, nor the ability to maintain the development of our expertise. After taking over the management of the company in 1987, with consistency, persistence and immeasurable hard work from all the personnel, we managed to transform the company into a highly regarded and well-respected group by the name of Atlas Pantou.

From prehistoric times to the present, the building techniques that have been adopted in Cyprus have played a major role in the development of our quality of life; they have contributed to the local population's survival, evolution and progress, even shaping our culture.

# 18

# BOOK

## THE HISTORY OF CONSTRUCTION IN CYPRUS: FROM PREHISTORY TO THE 21ST CENTURY



The aim of this study was to record and publish the history of the art of building in Cyprus, from ancient to modern times. This publication provides a fascinating insight into this aspect of our culture, and is an invaluable source of knowledge of our building heritage from its origins up to the present day.



The book entitled 'The History of Construction in Cyprus: From Prehistory to the 21st Century' is Atlas Pantou's offering to our country, its people and its culture. We deem it to be a project of timeless value, as it documents and showcases our cultural heritage relating to construction. This is our way of contributing to the acknowledgement, recording and promotion of thousands of years of human inventiveness and creativeness that is evidenced by a variety of buildings and structures that adorn our land. I would like to sincerely thank all the authors, contributors and generally anyone who helped in any way to "build" this publication.

# BOOK

## THE HISTORY OF CONSTRUCTION IN CYPRUS: FROM PREHISTORY TO THE 21ST CENTURY



Mr. Tonis Toumazis, founder of the ATLAS PANTOU and ATLAS PANTON groups, had the pleasure and honour of donating the book 'The History of Construction in Cyprus: From Prehistory to the 21st century' to the Senator from New Jersey and Chairman of the Senate Foreign Relations Committee, Robert Menendez, during his recent visit in Cyprus.

Atlas Pantou group donated the book "The History of Construction in Cyprus: From Prehistory to the 21st Century" to the Cyprus Association of Civil Engineers (CYACE). The book was received on behalf of the Association by its president Mr. Andreas Theodotou.



Mr. Tonis Toumazis, Founder of ATLAS PANTOU and ATLAS PANTON groups, in a meeting he had with the Mayor of Nicosia Mr. Konstantinos Giorkadjis he donated the book "The History of Construction in Cyprus: From Prehistory to the 21st Century" to him.



# DOCUMENTARY

## VAROSHA – EUROPE'S ENCLOSED TOWN

Dear readers,

Friends of Cyprus,

We would like to inform you about the release of a documentary entitled 'Varosha Europe's Enclosed Town' following the initiative of Mr. Tonis Toumazis, to publicize the special issue and the unacceptable situation of the enclosed city of Varosha for the last 49 years.

The enclosed city of Varosha had a population of more than 20.000 residents in 1974. The Turkish invasion declared the area a military zone, thus the area is inaccessible and the return of the people to their homes, even for just a visit, becoming a fade possibility. In the meantime, Varosha has been left in ruins, to become a ghost city.

The documentary is interspersed with interviews from prominent personalities who project the soul of Famagusta.

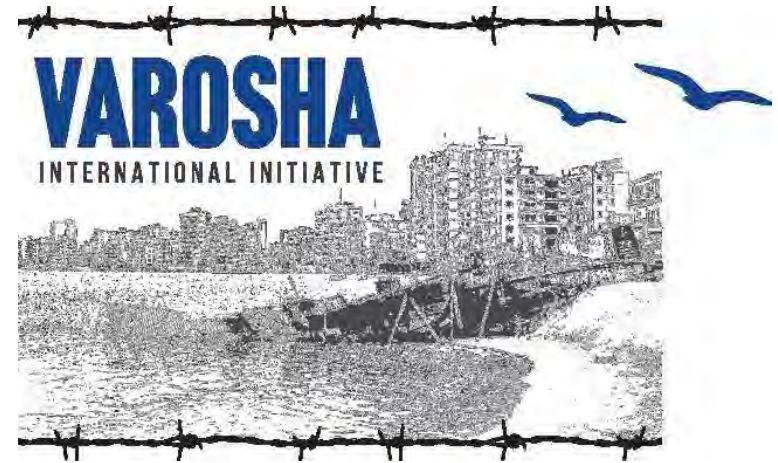
The creation of the documentary is done with the aim of informing, disseminating, and promoting it throughout the European Union and everywhere in the world, to make known a reality that most certainly ignore.

The creation of the documentary was undertaken by the company 'Green Olive Films' and is presented by the "International Initiative for Varosha".

We appeal to you to bring this awareness our documentary aims at to your people, to promote further and help view it in all the European countries and the world in general, so that the abominable reality of the state the city is in, is known to all people. You can access our documentary in the link below:

<https://vimeo.com/greenolivefilms/varosha>

Yours faithfully,  
**Tonis Toumazis**



# CONFERENCES / PRESENTATIONS / EVENTS / SPONSORSHIPS



## MAJOR SPONSOR OF RIALTO THEATRE

For a second consecutive year, **ATLAS PANTOU** is one of the 'Major Sponsors' of the Rialto Theatre. For 23 years, Rialto Theatre has been a Cultural Organization that produces and manages culture through a wide range of theatrical performances and various other cultural activities. Its mission is to create suitable conditions for the production and promotion of culture, through education and entertainment, aiming at the development of a modern and human-centered society.

By supporting the activities of Rialto Theatre, **ATLAS PANTOU** aims to strengthen the production and development of modern culture, in an effort to contribute to a better future for the country and its people.

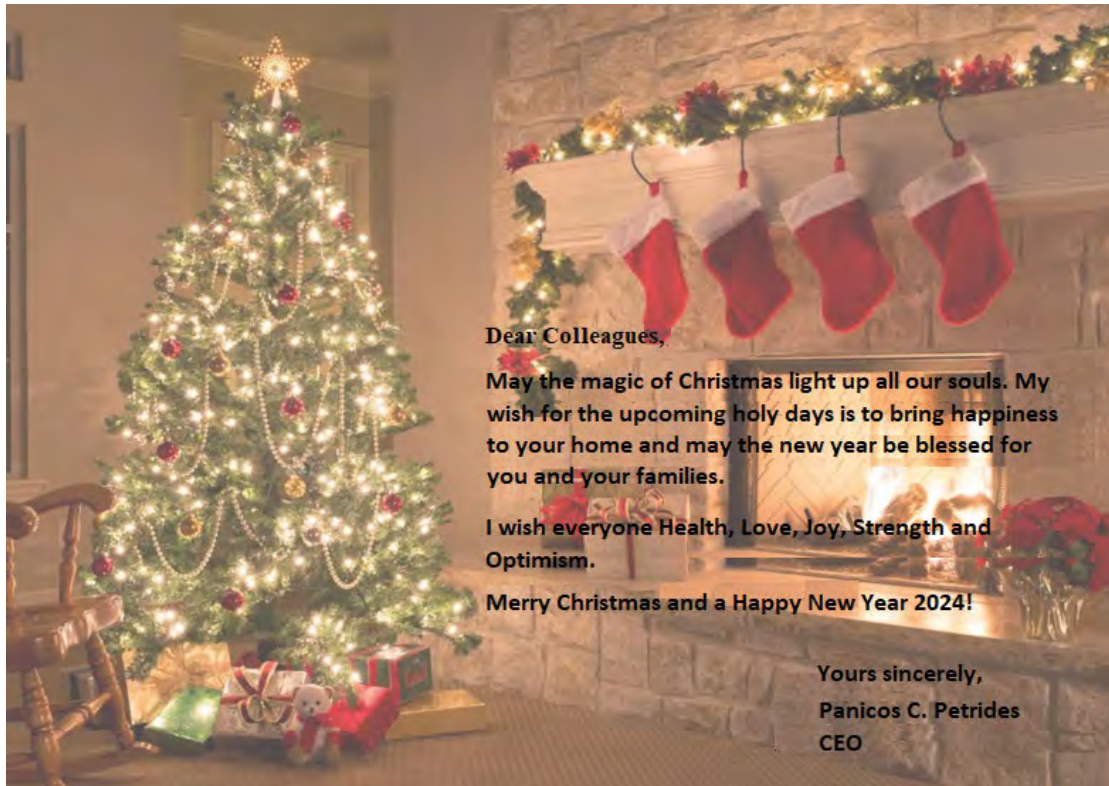


# CONFERENCES / PRESENTATIONS / EVENTS / SPONSORSHIPS

## Small Christmas staff gathering at Limassol Head Offices and Nicosia Offices

Limassol's Head Office and Nicosia Office staff had a small gathering for a glass of wine accompanied by various festive snacks and exchange of Christmas wishes.

Below the Christmas message of the CEO of **ATLAS PANTOU** to the staff:



Dear Colleagues,

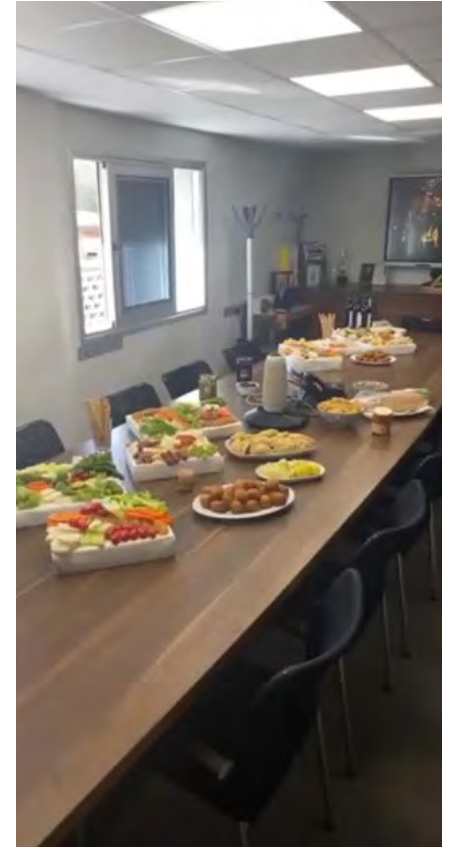
May the magic of Christmas light up all our souls. My wish for the upcoming holy days is to bring happiness to your home and may the new year be blessed for you and your families.

I wish everyone Health, Love, Joy, Strength and Optimism.

Merry Christmas and a Happy New Year 2024!

Yours sincerely,  
Panicos C. Petrides  
CEO

# CONFERENCES / PRESENTATIONS / EVENTS / SPONSORSHIPS



# STAFF

## STAFF TRAINING

Our people are our most valuable and important asset, this is why we invest in educating our staff in every level.

As a company based on its employees, we always want to offer the best possible sources of knowledge and development to all of our staff members.

Within the framework of our modernization and development policies, we have launched a number of innovative programs, designed and implemented since the beginning of the year. Education plays a vital role for us, since without it we wouldn't be able to achieve our goals.

With faith in our human-centric character and deep trust to our staff we will continue our mission: always evolving through the knowledge of our people.

Here are some of the most important staff training courses for October until December 2023:

- SEMINAR ON CONSTRUCTION CONTRACTS, 2ND EDITION AND PLANT AND DESIGN-BUILT CONTRACTS, 2ND EDITION (2017, REPRINTED 2022 WITH AMENDMENTS)
- F.I.A. CYPRUS: FIRE SUMMIT 2023 (FIRE SAFETY IN HIGH-RISE BUILDINGS)
- ISO 45001:2018: SEMINAR ON HEALTH&SAFETY IN THE WORKPLACE FOR INTERNAL AUDITORS
- ISO 9001:2015: SEMINAR ON QUALITY MANAGEMENT FOR INTERNAL AUDITORS
- ISO 14001:2015: SEMINAR ON ENVIRONMENTAL MANAGEMENT FOR INTERNAL AUDITORS
- TRAINING ON SAFE ASSEMBLY, DISASSEMBLY AND INSPECTION OF SCAFFOLDING
- TRAINING ON FIRST AID IN THE WORKPLACE – EMERGENCIES
- INTERNATIONAL SUMMIT, CyOSH2023: "OCCUPATIONAL SAFETY & HEALTH - DIGITALIZATION AND NEW FORMS OF WORK"
- TRAINING ON FIRE SAFETY AT WORK: DESIGN, IMPLEMENTATION, ACTIONS
- DEPARTMENT OF LABOUR: SEMINAR ON INTERNAL PROTECTION AND PREVENTION SERVICES FOR OCCUPATIONAL HEALTH&SAFETY
- SEMINAR ON CHANGES IN VAT LEGISLATION AND CLARIFYING CIRCULARS ISSUED IN THE LAST 12 MONTHS
- SEMINAR ON HEALTH&SAFETY, CONSTRUCTION SECTOR
- TRAINING ON SAFE USE OF TOWER CRANES
- SEMINAR ON ENTERPRISE DIGITAL TRANSFORMATION IN CYPRUS USING PROJECT MANAGEMENT TECHNIQUES



# STAFF



## Our team is growing!

We are pleased to introduce the latest members of our company, selected among many candidates, because they share the same mindset and values as us.

We welcome and greet them with a smile:

- **Charalampous Theofanis / Foreman**
- **Polyviou Maria / Administration Officer**
- **Paralimnitis Minas / Site Engineer**
- **Tsangaridou Maria / Quantity Surveyor**
- **Kasapis George / Foreman**