

PANTOUMAZI



Sky Tower
Limassol



Limassol Del Mar - Limassol



Palisandro Hills - Paphos



American University of Beirut Mediterraneo campus - Paphos



Ararat Grand Residences
Limassol



Limassol Green-Robin West and Robin East Residential Buildings - Limassol



CONTENT

p.1

INTRODUCTORY NOTE

p.2

RECENTLY COMPLETED PROJECTS

p.11

PROJECTS IN PROGRESS

p.18

NEW PROJECTS

p.19

BOOK

THE HISTORY OF CONSTRUCTION IN CYPRUS:
FROM PREHISTORY TO THE 21ST CENTURY

p.24

CONFERENCES / PRESENTATIONS / EVENTS / SPONSORSHIPS

p.28

STAFF

INTRODUCTORY NOTE



Dear **ATLAS PANTOU** friends and associates,

We always valued our relationship, and it is our strong belief that close, honest, sincere and personal communication is very important especially in the field in which we operate.

As developments in our country progress, we believe by using the technology we established a more direct communication channel with you. This is actually the reason we created the **ATLAS PANTOU** Newsletter.

Following is our latest news for the period January to March 2023.

Kind regards,
ATLAS PANTOU

1

RECENTLY COMPLETED PROJECTS



Harmony Residence, Limassol

Project Description: Harmony Residence is a gated apartment complex specifically designed to accommodate the expectations of homeowners who value a good quality of life and appreciate everyday modern comforts. The building consists of 18 stylish and modern 1, 2, and 3-bedroom apartments separated into 2 apartment blocks. Block A has 2 floors and 8 apartments. Block B has 3 floors with 8 apartments on the first 2 floors and 2 magnificent 3-bedroom penthouses with spacious roof terraces on the 3rd floor. Harmony Residence is located in the cross-roads of Ayias Fylaxeos and Spyrou Kyprianou (Makedonias Avenue), Kapsalos area.

The project was developed on behalf of **D. Sykopetrides Ltd.**

Architects: Elias Andronicou & Associates.

QS: A.Y. Toumazis Quantity Surveyors L.L.C

Electromechanical Consultants: Prime Design Consulting Engineers Ltd and M&Z Zindilis & Associates.

Structural design: A.A. Sophocleous



2

RECENTLY COMPLETED PROJECTS



MEDO B - Medochemie, Limassol

Project Description: Construction of a 2-storey microbiological MEDO B at Medochemie plant in Limassol. The building consists of a steel frame except for the staircases which will be made of concrete. The finishes of the external walls are a combination of fairfaced concrete and alucobond. Works also included the construction of a ground floor parking area.

The project was developed on behalf of **Medochemie Ltd.**

Architects: Akis Charalambous Architects

Q.S.: A.Y. Toumazis Quantity Surveyors LLC

Electromechanical Consultants: Hiteco engineering Ltd

Structural design: Loizou & Shiamtanis Civil Engineers Ltd



3

RECENTLY COMPLETED PROJECTS



Private residence in Paniotis area in Germasogeia village

Project Description: A unique, luxurious around 1,200m² villa sitting on a plot of 2,900m², with 6 bedrooms distributed harmoniously on the basement, ground floor and first floor, surrounded by beautiful sea and mountain views. Decorated with wood, stone and equipped with state-of-the-art technology, the villa is designed to blend in with the natural environment of the surrounding area. It features a private pool, elevator, fitness center, wine cellar, BBQ area, private drive through and extensively well-made outdoor landscaping.

Architects and Electromechanical Consultants: Vakis Associates Architects & Designers.

QS: A.G. Athanasiou

Structural design: C. Papaleontiou Engineering Consulting Services



4

RECENTLY COMPLETED PROJECTS



BIOGENA – PHASE B’ – NEW R&D, Limassol

Project Description: The works of the project consisted of demolition works of part of an existing building and construction of new premises. The new premises include new offices and labs. Works also included various road and other external works.

The project was developed on behalf of **MEDOCHEMIE LTD.**

Architects: Akis Charalambous Architects

Q.S.: A.Y. Toumazis Quantity Surveyors LLC

Electromechanical Consultants: Hiteco engineering Ltd

Structural design: Loizou & Shiamtanis Civil Engineers Ltd



5

RECENTLY COMPLETED PROJECTS



Sky Tower, Limassol

Project Description: Luxury high-end apartments on a 23-storey tower with hotel amenities developed with the latest architectural and design trends. Situated only 300m from the sea, the apartment owners can enjoy the vast amenities of the facilities that among others include incredible panoramic sea views, relaxing spa breaks, shared outdoor pool, heated indoor pool, fitness centre, tennis court, fantastic evergreen gardens surrounding the tower and spacious underground parking. Sky Tower rests harmoniously on the cityscape of the Limassol tourist area thanks to its magnificent design by one of United Kingdom's leading architectural agencies. This 23-storey challenging project has aluminium coating all over the outside. One of the remarkable things about this construction is that the floor slabs, unlike the conventional ones, are post-tensioned. The post-tensioned slabs are designed to provide active reinforcement, making the building blocks even more efficient in terms of stability and economy in building materials.

The project was developed on behalf of **Prime Property Group**.

Architects: UHA London and Panos Panayiotou & Associates, PPA.

Q.S.: PMI (Project Management International).

Electromechanical Consultants: Alexis S. Stavrou & Associates.

Structural design: A.J. Pericleous LLC

Contractor: Joint Venture between Atlas Pantou Co Ltd and Man Enterprise (Atlas Pantou - Man JV).

RECENTLY COMPLETED PROJECTS



New LIDL store in Ayios Athanasios, Limassol

Project Description: The works of the project included demolition works of all existing buildings and the construction of a new LIDL store of an internal area of around 2,200m² with a metallic roof of around 3% inclination, external thermal facade and shading at the entrance. External works included parking spaces with shades, road and sidewalk works around the perimeter of the store, installation of the various services and the configuration of a green area/park.

The project was developed on behalf of **Lidl Cyprus**.

Architects: Stamatoukos, J., Technical - Studies S.A.

Q.S.: Christos D. Ioannou Construction Cost Consultants LLC

Electromechanical Consultants: Dicom Services Ltd (Vrasidas Mavroudis)

Structural design: Papargyris G. – A. Kardoula O.E.



7

RECENTLY COMPLETED PROJECTS



Acropolis Family Residences, Nicosia

Project Description: A 6-storey apartment complex with 8 luxurious apartments. The two top floor apartments have their own private roof gardens with a barbeque area, a private pool and an office. Apartment owners can also enjoy a private swimming pool which is located on the semi- open 1st floor. The project was developed in the prestigious area of Acropolis in Nicosia.

The project is being developed on behalf of **Cyagama Ltd.**

Architects: Photiou Architects

Q.S.: Andreas Polycarpou

Electromechanical Consultants: Primedesign Consulting Engineers Ltd.

Structural design: George Kolonias



RECENTLY COMPLETED PROJECTS



Limassol Del Mar, Λεμεσός

Project Description: Developed less than 25m from the beach, on a plot of 34,000m² with its south side offering 170m of unobstructed sea views. Inspired by the gentle and curved waves of the Mediterranean in the south and from the low hills to the north, the unique sinusoidal curves of the project appear both in its center and on the floors with the curved walls creating a unique sculpture of approximately 40,000m². Clearly influenced by nautical architecture, the building reflects a large cruise ship, with the outer gardens of the summit standing proudly as the bridge and the command station. The first construction phase involved the delivery of the first two towers (A and B), 13 and 18 floors respectively. The second phase involved the delivery of the apartments of the "Signature Collection", that is the eastern tower of 28 floors.

Developers: Cypeir Properties Ltd (a partnership between Leptos Group and D. Zavos Group).

Architects: Benoy and UDS Architects Antoniadis & Eleftheriou.

Electromechanical Consultants: Unemec.

Q.S.: Christoforides Makris & Partners Ltd.

Structural design: Andros Achilleos - ASD Hyperstatic Engineering Design

Contractor: AMIC Contractors (Joint venture between Atlas Pantou Co Ltd - leader, Man Enterprise, ICM Group, CMB Societa Cooperativa)



RECENTLY COMPLETED PROJECTS



Larnaca Sewerage & Drainage project C12A

Project Description: The contract included the investigation, management and cleaning up of trenches from antiquities, existing services, and any other obstacles in order to determine the final route of the future sewerage and drainage system.

The project was executed on behalf of **LARNACA SEWERAGE & DRAINAGE BOARD**.



PROJECTS IN PROGRESS



Ararat Grand Residences, Limassol

Start date: December 2019

Project Description: Luxury high-end apartments on a 23-storey tower with hotel amenities. The project is being developed along the beach road of Parekkklisia area, in one of the most prestigious areas of Limassol. This unique high-rise building consists of only 17 luxurious apartments and a 5-floor penthouse. At road level there is a grand plaza leading to a gourmet restaurant, professional SPA, sauna, hammam, massage room, heated pool in a cave style enclosure, cigar lounge and a VIP bar for club members, wine cellar and jewellery boutique. At this level there is also a parking for residents as well as a separate parking for restaurant and commercial area visitors and guests. On the first floor there is the entrance lobby and reception on two levels. On the around 8,000m² grounds of the complex there is a half-Olympic size (25x10m) mosaic swimming pool with a bar, tennis, basketball and volleyball courts, a gym with showers and locker rooms, a park, and a playground. The project's grounds are enclosed with a secure fence, and a 24-hour video surveillance. The rest of the building consists of the following:

- 3rd and 4th storeys: Apartments.
- 5th storey: Garden Terrace with a healthy-food concept restaurant.
- 6th up to 8th storeys: Apartments.
- 9th storey: Restaurant with panoramic sea views.
- 10th up to 12th storeys: Apartments.
- 13th and 14th storeys: Continuation (from ground level) of the Wellness zone and Spa including an indoor heated Roman style pool with a bar ideal for breakfast and relaxation.
- 15th -17th storeys: Apartments.
- 18th-23rd storeys: 6-floor, 8 bedrooms penthouse apartment with its own elevator and a swimming pool.

Regarding the progress of works, the earthworks, the foundation works as well as the columns and slaps of the main building are long concluded. Brick and coating works are also long concluded. Currently the works are concentrated on concluding all the finishing works of the apartments, with the works up to level 17 to be already concluded. The finishing works are also progressing in the 6-floor penthouse (floor levels 18 up to 23) with the works regarding the curtain walling to be already concluded. Regarding the external works and the additional structural works including the parking area slab, the structural works are long concluded, and the finishing works are progressing. The works regarding the façade cladding of the tower are also progressing, with the remaining of the works to be concentrated on levels 0 (ground floor) up to level 5.

The project is being developed on behalf of **Maserdo Ltd.**

Architects: Photiou Architects

Q.S.: Andreas Polycarpou

Electromechanical Consultants: Primesdesign Consulting Engineers Ltd.

Structural design: George Kolonias

PROJECTS IN PROGRESS



Waterwork Vasilikos – Nicosia, Phase A': Construction of sub-project C1, Pipeline Nisou – Nicosia

Start date: September 2021

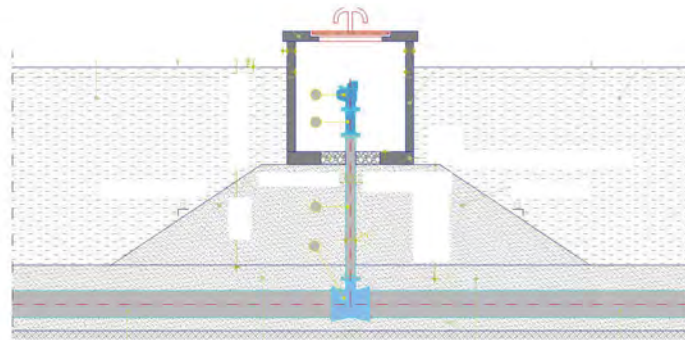
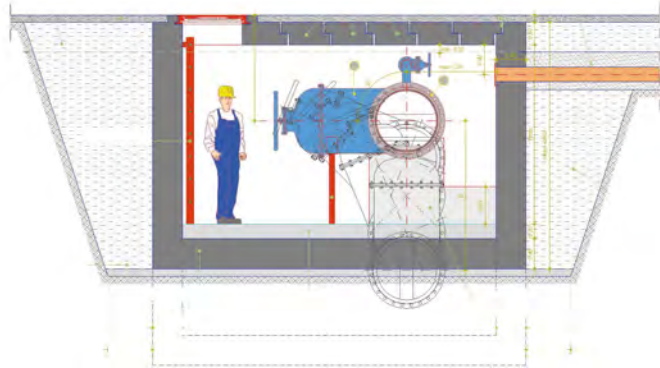
Project Description: This important sub-project is part of the large water project Vasilikos-Nicosia which aims to transport water from the Vasilikos Desalination Unit to Nicosia and will be a second major source of water supply in the wider Nicosia area. The contract includes the installation of malleable cast iron pipelines, 800mm and 700mm in diameter and total length of 17.2KM.

The works started by the highway exit towards the Kotsiatis village and are concluded up to the Chalepianes road (highway exit towards Tseri). The works on Makedonias street are also concluded and now the works concentrate on Spyrou Kyprianou street. Soon the works inside the village of Tseri will commence and will progress towards the Water Development Department tank in Tseri. These works were to commence earlier but were postponed by the Public Works Department because of other works executed in the area. Around 14km of pipelines are already installed.

The project is being executed on behalf of the **Water Development Department**.

Architects/Consultants: Dion. Toumazis & Associates

Karavokyris, G., & Partners Consulting Engineers S.A.



PROJECTS IN PROGRESS



Construction of flood protection works-contract F8, Limassol

Start date: January 2021

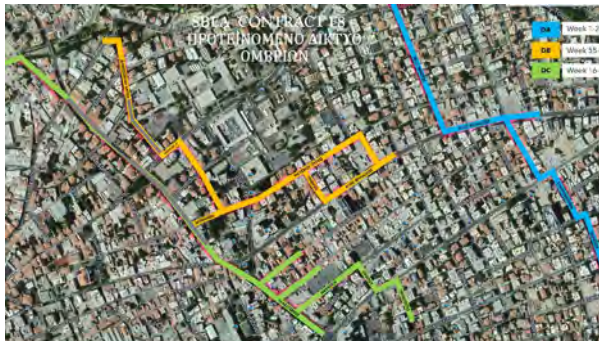
Project Description: The project is demarcated south of Makarios Avenue, east of the river Garyllis, west of Agias Zoni Street and north of Gladstonos and Navarinou Streets. The works include the construction of three main collectors for diverting rainwater to the Garylli riverbed. This is a project with an extremely high degree of difficulty, as it provides extensive excavation works on 27 streets in the center of Limassol, many of which are main commercial streets with increased traffic and commercial activity.



The works on Therissou, Vassilis Michailidis, Stavroforon, Ioustinou, Idaliou, Orfeos, Victor Hugo, Lanitis, Thessalonikis, Dodekanisou, Beyazit, Ayias Fylaxeos, Leontiou, Eracleous, Filiou Zannetou, Voreiou Ipeirou and Pekinou streets have been completed. Currently in progress are the works on Navarinou, Oratiou, Makriyianni and Leontiou Machaira streets.

The project is being executed on behalf of **LIMASSOL AND AMATHOUNTA SEWERAGE & DRAINAGE BOARD.**

Consultants (Study – Supervision): Joint Venture: Z&A P. Antonaropoulos & Associates and ROIKOS Engineering Consultants SA



PROJECTS IN PROGRESS



Construction of the 'Neapolis Project' in Limassol

Start date: June 2022

Project Description: A five-storey residential building with 16 modern and stylish apartments of covered area around 2,500m². The building has 6 levels (Ground floor, 1st floor, 2nd floor, 3rd floor, 4th floor and a roof garden). Each of the 4 floors has 4 apartments. The residents of this luxurious project can enjoy a private pool which is located at the roof garden. Part of the façade will feature ELVA aluminium cladding.

Regarding the progress of works, the building's foundation works and the works regarding the construction of the base slab are concluded. Now the works concentrate on the works regarding the construction of the flooring of the building's 1st level.

The project is being developed on behalf of **Swift Global Ltd.**

Architects: Panos Panayiotou + Associates

Civil Engineer: Advanced Civil Engineering Solutions

Q.S.: Efthymios Andreou & Associates Ltd

M.E.P. (Mechanical, Electrical, Plumbing) Consultants: K. Karantonis Partners LLC

Structural design: Advanced Civil Engineering Solutions



PROJECTS IN PROGRESS

Industrial Bottling Plant, Limassol

Start date: August 2022

Project description: The project consists of the construction of 3 independent Industrial Buildings built in a plot of around 20,000m². The Bottle Decoration building is a 2-floor building with a reinforced concrete frame and a metal roof. The Bottling Plant and the Storage buildings are metal/industrial buildings. The works of the project also include construction of retaining walls, a tunnel, and various external works including parking areas, roadworks, and services.

Regarding the progress of works, the excavation and earthworks are long concluded. In respect to the Storage Building works, the construction works are completed except the finishing works that are going to be carried out at a later stage as per customer instructions. Also, the electromechanical works of the building are also progressing.

In respect to the Bottle Decoration building works, the foundation works and the basement's slab are concluded. Now the works are concentrated on the 1st floor's slab. Also, the electromechanical works on the basement have started.

In respect to the Bottling Plant's works, now the works concentrate on piling and foundation works.

The external works of the project are also progressing with the works currently concentrated on the construction of the perimeter walls and the four EAC substations.

The project is being developed on behalf of **BOUTIQUE BEVERAGES BOTTLING INTERNATIONAL LTD.**

Architects: P. Papadopoulos & Associates Consulting Engineers LLC

QS: P. Papadopoulos & Associates Consulting Engineers LLC

Electromechanical Consultants: Karantonis Partners LLC

Structural design: PPA Engineers



PROJECTS IN PROGRESS



Palisandro Hills, Paphos

Start date: September 2022

Project description: A club township consisting of 18 luxurious villas with private swimming pools and their associated road and other external works, including an orchard and a playground. Its design combines a careful attitude towards nature aiming at the same time to create an uncompromisingly comfortable living environment. The general arrangement of the built-up area features two lines of land plots along the valley, making good use of the height difference, recessing the villas located along the valley into the mountain in order to preserve the picturesque panoramic views from the villas situated on the western line.

Palisandro Hills is in Peyia village, Paphos. Its premium location next to a mountain river and a national park guarantees to future residents' spectacular views of the mountains and coastline.

Regarding the progress of works, the excavation and earthworks are concluded. The foundation and brick works for the first 3 villas are also concluded. Currently the works are concentrated on the concrete works for the remaining 15 villas. The external works of the project commenced with the current works to be concentrated on the construction of the private roads of the project and the EAC substation.

The project is being developed on behalf of **INEX GROUP**.

Architects: Simpraxis Architects LLC

QS: MDA Cyprus LLC

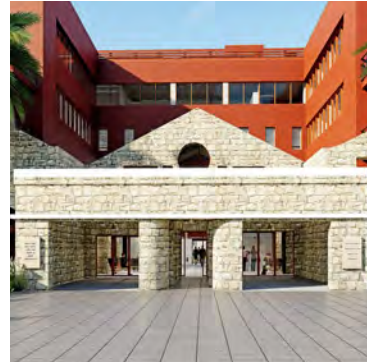
Electromechanical Consultants: DoubleN Electrical Consulting Engineering LLC (Electrical) and Emech Engineering - Kikis Hadjifrangiskou (Mechanical)

Structural design: Antoniou Andreas



16

PROJECTS IN PROGRESS



American University of Beirut – Mediterraneo campus, Paphos

Start date: September 2022

Project description: The American University of Beirut (AUB) is one of the MENA (Middle East and North Africa) region's oldest and most prestigious institutions of higher education. It will be its first campus outside Lebanon. The project consists of the construction of campus' Administration building, the Classrooms' building and the Auditorium & Facility building along with the associated external works.

The Administration building will be located at the west front side of the developing plot adjacent to the main access road. It consists of the university administration staff and professors' offices with their services including an entrance lobby, vertical and horizontal circulations, elevators lobby, restrooms, pantries, electric/telecom rooms, a data centre, offices and meeting rooms. The building is distributed on a ground and 3 other floors with an overall gross building area of around 4,270 m².

The Classrooms' building will be located at the east back side of the developing plot. It consists of all the classrooms and spaces related to students with their services including an entrance lobby, vertical and horizontal circulations, elevators lobby, laboratories, study rooms, restrooms, electrical and telecom rooms. The building is distributed on a ground and 3 other floors with an overall gross building area of around 4,850 m².

The Auditorium & Facility building will be located adjacent to the Administration building at the south side of the developing plot. It consists of the campus' facilities and MEP (Mechanical, Electrical and Plumbing) spaces including the Auditorium, a snack bar, water tanks and pump rooms, storages, electrical main rooms, a generator, and maintenance staff offices. The building is distributed on a basement, a ground, and a mezzanine floor with an overall gross building area of around 2,100 m².

The Administration and the Classrooms' buildings will be linked with an open colonnade at ground level with an overall gross building area of around 425 m². An electrical sub-station and several storage areas with an overall gross building area of around 230 m² will be constructed under the bleachers between the Auditorium & Facility and Classrooms' buildings.

Regarding the progress of works, the excavation and earthworks of the whole project are completed.

Administration building works: The steel support works of the monument building are concluded. Foundation works as well as concrete works up to the 1st floor are also completed. Currently the works are concentrated on the concrete works of the 2nd floor.

The Classrooms' building works: The foundation works as well as the concrete works up to the 3rd floor are concluded. Currently the works are concentrated on the concrete works of the 4th and final floor of the building. The works on the finishing as well as the electromechanical works have started.

The Auditorium & Facility building works: The foundation works and the basement of the building are completed. Currently the works are concentrated on the concrete works of the Ground floor.

Sub-station works: The foundation works are completed. Currently the works concentrate on the concrete works of the 1st and last floor.

The project is being developed on behalf of the **American University of Beirut**.

Architects: Dar Al-Handasah Consultants (Lebanon) and Antreas Ioannou Architects (local)

QS: N/A

Electromechanical Consultants: Dar Al-Handasah Consultants

Structural design: Dar Al-Handasah Consultants (Lebanon) and Antreas Ioannou Architects (local)

Contractor: Joint Venture between Atlas Pantou Co Ltd and Man Enterprise (Atlas Pantou - Man JV).

NEW PROJECTS



Limassol Greens – Robin West and Robin East Residential Buildings, Limassol

Start date: March 2023

Project description: Limassol Greens is one of the largest master planned developments in the city of Limassol. AECOM, the world's premier infrastructure firm, designed a masterplan that ingeniously sets the residential and commercial units in the centre of the resort development, surrounding them with golf greens and fairways on all sides. Developed over an area of 1.4 million m² Limassol Greens entails an 18-hole championship golf course with a state-of-the-art clubhouse, 500 villas and 250 apartments to be developed in phases, retail and commercial facilities including shops, restaurants, bars, a Wellness Centre with an outdoor pool, spa treatment facilities, fitness area, yoga and meditation lawns, tennis, basketball courts and cycleways, children's playgrounds, an open-air amphitheatre and a herb garden.

The Robin Apartments consist of two blocks, Robin West and Robin East, set out over a basement, a ground floor and three storeys, served by two separate spacious lobby areas with their own lift. Each apartment block covers around 6,030m² and consists of 26 luxurious 2 and 3-bedroom apartments. Located in the heart of the resort, within a minute's walk from The Village and The Clubhouse, the Robin Apartment buildings are the only buildings tall enough to enjoy unparalleled views over the Golf Course and up to the Salt Lake, the forest and the sea. The chic and practical interiors combine carefully crafted layouts that work hard to maximise the interior spaces while ensuring the focus remains on the generous terrace and views beyond.

The project is being developed on behalf of **LANITIS GOLF PUBLIC CO LTD.**

Architects: HKS Architects (USA), J+A Philippou Architects - Engineers

QS: Yioula Michaelidou - M.Y.QS Services LTD

Electromechanical Consultants: GEMAC Consultancy Services Ltd

Structural design: PPA Engineers (Panos Papadopoulos)



BOOK

THE HISTORY OF CONSTRUCTION IN CYPRUS: FROM PREHISTORY TO THE 21ST CENTURY



Famagusta Municipality Library



Russian Cultural Center Library



TEPAK University



Limassol Public Library

The Atlas Pantou Group, boasting 80 years of history, is an important chapter of the construction industry in Cyprus. With respect for the art of construction, as well as our land and culture, two years ago it set a grandiose plan, to publish the first comprehensive book on the history of Construction in Cyprus, with the main goal of contributing to our island's culture.

The book "The History of Construction in Cyprus: From Prehistory to the 21st Century" unfolds just that, the history of Construction in Cyprus from the dawn of human civilisation to the 21st century.

A select group of 10 scientists-researchers, based on modern research on the history, archaeology, and architecture of Cyprus, has written down the raw materials, the techniques, and the construction forms in their diachronic course through the political, social, financial, and cultural changes on the island.

Abundantly illustrated and with a glossary of technical terms, this bilingual edition (greek and english) aspires to be an essential handbook for both experts and non-experts of the past and modern-day generation.

More information about the book can be found on our website www.atlaspantougroup.com / **Who We Are / Our culture** or by clicking [HERE](#). Also, the book is **exclusively** available for anyone who wishes to purchase it through our website www.atlaspantougroup.com / **Who We Are /Our Culture**, or by clicking [HERE](#).

BOOK

THE HISTORY OF CONSTRUCTION IN CYPRUS: FROM PREHISTORY TO THE 21ST CENTURY

Atlas Pantou Group started with the donation of the publication "The History of Construction in Cyprus: From Prehistory to the 21st Century" to the following libraries:

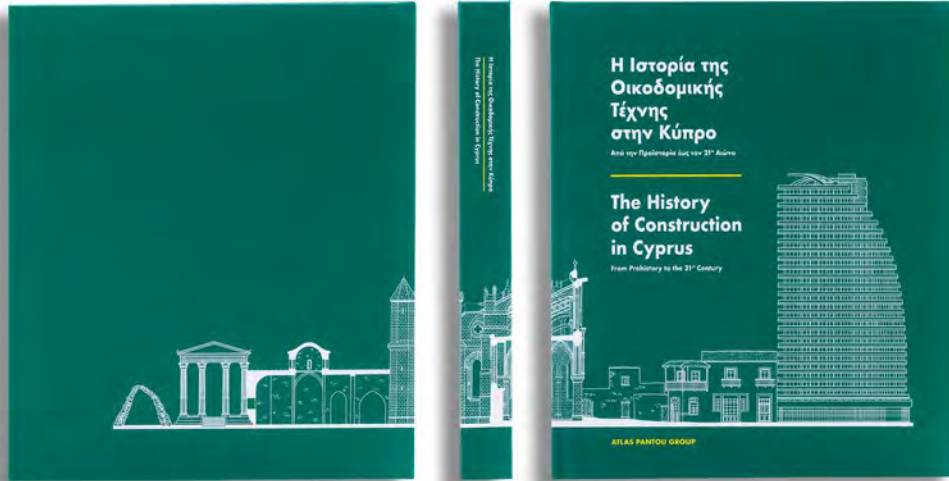
- ✓ University of Cyprus – Learning Resource Centre UCY Library "Stelios Ioannou"
- ✓ Library of TEPAK University
- ✓ Library of University of Nicosia
- ✓ Library of Frederick University
- ✓ Library of European University
- ✓ The Cyprus Institute
- ✓ Cyprus Library
- ✓ Elpinikios Library
- ✓ Library of the Department of Antiquities
- ✓ Russian Cultural Center Library
- ✓ Achillios Municipality Library
- ✓ Archeological Research Library
- ✓ Press & Information Office Library
- ✓ Municipal Art Centre Library
- ✓ Library KEBE (Cyprus Chamber of Commerce and Industry Library)
- ✓ Cyprus Productivity Center (CPC) - Mediterranean Institute of Management Library
- ✓ CYS: Cyprus organization for Standardization Library (CYS)
- ✓ Cyprus-American Archaeological Research, Institute Library (CAARI)
- ✓ Limasol Public Library
- ✓ Strovolos Municipality Library
- ✓ Famagusta Municipality Library

ATLAS PANTOU will also proceed with the donation of the book to libraries/ university libraries abroad.

20

BOOK

THE HISTORY OF CONSTRUCTION IN CYPRUS: FROM PREHISTORY TO THE 21ST CENTURY



Foreword by Mr. Tonis Toumazis, Founder of ATLAS PANTOU Group

From cave dwelling to the first stone and timber structures, from clay to concrete and iron, man has not stopped evolving. Once, in the distant past, we gazed at the skyline from the port of ancient Salamis. Today we gaze at it from the balconies of skyscrapers, watching merchant ships, cruise ships, and hydrocarbon mining platforms plough the seas of our island.

As a businessman and civil engineer, I have always admired the art and science of building. Universities taught me how to methodically apply its techniques and principles, but it was my father, Panayiotis Toumazis who taught me its moral code.

Many years ago, in 1937, he established his first construction office in Famagusta. This

would be the cornerstone of the construction company that followed and the group of companies that developed later on.

The journey throughout the years has proven very challenging. The 1974 Turkish invasion inevitably affected the companies of the group, leading some of them to near closure. We lost Famagusta and our properties, yet we never lost the courage to continue, nor the ability to maintain the development of our expertise. After taking over the management of the company in 1987, with consistency, persistence and immeasurable hard work from all the personnel, we managed to transform the company into a highly regarded and well-respected group by the name of Atlas Pantou.

From prehistoric times to the present, the building techniques that have been adopted in Cyprus have played a major role in the development of our quality of life; they have contributed to the local population's survival, evolution and progress, even shaping our culture.

21

BOOK

THE HISTORY OF CONSTRUCTION IN CYPRUS: FROM PREHISTORY TO THE 21ST CENTURY



The aim of this study was to record and publish the history of the art of building in Cyprus, from ancient to modern times. This publication provides a fascinating insight into this aspect of our culture, and is an invaluable source of knowledge of our building heritage from its origins up to the present day.



The book entitled 'The History of Construction in Cyprus: From Prehistory to the 21st Century' is Atlas Pantou's offering to our country, its people and its culture. We deem it to be a project of timeless value, as it documents and showcases our cultural heritage relating to construction. This is our way of contributing to the acknowledgement, recording and promotion of thousands of years of human inventiveness and creativeness that is evidenced by a variety of buildings and structures that adorn our land. I would like to sincerely thank all the authors, contributors and generally anyone who helped in any way to "build" this publication.

BOOK

THE HISTORY OF CONSTRUCTION IN CYPRUS: FROM PREHISTORY TO THE 21ST CENTURY



Mr. Tonis Toumazis, founder of the ATLAS PANTOU and ATLAS PANTON groups, had the pleasure and honour of donating the book 'The History of Construction in Cyprus: From Prehistory to the 21st century' to the Senator from New Jersey and Chairman of the Senate Foreign Relations Committee, Robert Menendez, during his recent visit in Cyprus.

Atlas Pantou group donated the book "The History of Construction in Cyprus: From Prehistory to the 21st Century" to the Cyprus Association of Civil Engineers (CYACE). The book was received on behalf of the Association by its president Mr. Andreas Theodotou.



Mr. Tonis Toumazis, Founder of ATLAS PANTOU and ATLAS PANTON groups, in a meeting he had with the Mayor of Nicosia Mr. Konstantinos Giorkadjis he donated the book "The History of Construction in Cyprus: From Prehistory to the 21st Century" to him.



CONFERENCES / PRESENTATIONS / EVENTS / SPONSORSHIPS



Cutting of the New Year's cake for Atlas Pantou Co Ltd

On Friday, January 27th, 2023, the cutting of the New Year's cake of our company Atlas Pantou Co Ltd took place. The cutting of the cake was accompanied by a meal at a well-known tavern in Limassol.



CONFERENCES / PRESENTATIONS / EVENTS / SPONSORSHIPS



25

CONFERENCES / PRESENTATIONS / EVENTS / SPONSORSHIPS

Mr. Tonis Toumazis name day

On Tuesday, January 17th, Mr. Tonis Toumazis, founder of the ATLAS PANTOU and ATLAS PANTON groups, celebrated his name day. As a sign of appreciation and love towards him, the staff of ATLAS PANTOU gave him a nice flower bouquet.



CONFERENCES / PRESENTATIONS / EVENTS / SPONSORSHIPS



M&R Asbestos Co Ltd: Retirement of Mrs. Ritsa Papaleontiou, General Manager and Founding Executive. Appointment of Mr. Charalambos Efrem as the new General Manager

On Behalf of the Board of Atlas Pantou Group, Mr. Tonis Toumazis announced the retirement of Mrs. Ritsa Papaleontiou from the position of General Manager of M&R Asbestos Co Ltd as of January 1st, 2023. Mr. Charalambos Efrem, who has been working with M&R Asbestos Co Ltd for the last 9 years, was appointed as the new General Manager.

Mrs. Ritsa Papaleontiou, being a founding executive of M&R Asbestos Co Ltd, was appointed General Manager in 2008. Mr. Tonis Toumazis, through his letter towards staff and associates, expressed his gratitude to Mrs. Ritsa Papaleontiou for her contribution to the company over the years. As he said, she played a vital role in the company's growth and success. Mrs. Ritsa will continue to support and provide her services and knowledge as an external Consultant.

Regarding the newly appointed General Manager, Mr. Charalambos Efrem, Mr. Toumazis stated that through his wealth of experience and proven track record of success the Board is confident that he will provide the leadership and vision necessary to guide the company through this exiting time of growth and opportunity.



STAFF

STAFF TRAINING

Our people are our most valuable and important asset, this is why we invest in educating our staff in every level.

As a company based on its employees, we always want to offer the best possible sources of knowledge and development to all of our staff members.

Within the framework of our modernization and development policies, we have launched a number of innovative programs, designed and implemented since the beginning of the year. Education plays a vital role for us, since without it we wouldn't be able to achieve our goals.

With faith in our human-centric character and deep trust to our staff we will continue our mission: always evolving through the knowledge of our people.

Here are some of the most important staff training courses for January until March 2023:

- **FIRST AID IN THE WORKPLACE**
- **VAT ON REAL ESTATE, ONLINE SEMINAR ORGANISED BY THE INSTITUTE OF CERTIFIED PUBLIC ACCOUNTANTS OF CYPRUS**
- **JDE TRAINING (GENERAL LEDGER, ACCOUNTS PAYABLE)**
- **HEALTH & SAFETY ON THE WORKPLACE (MINIMUM REQUIREMENTS FOR TEMPORARY OR MOBILE SITES) REGULATIONS OF 2015**



ORACLE®

JD EDWARDS



STAFF



Our team is growing!

We are pleased to introduce the latest members of our company, selected among many candidates, because they share the same mindset and values as us.

We welcome and greet them with a smile:

- **Kyriacou Nickolas / Site Engineer**
- **Nicolaides Nikolaos / Accounts Assistant**